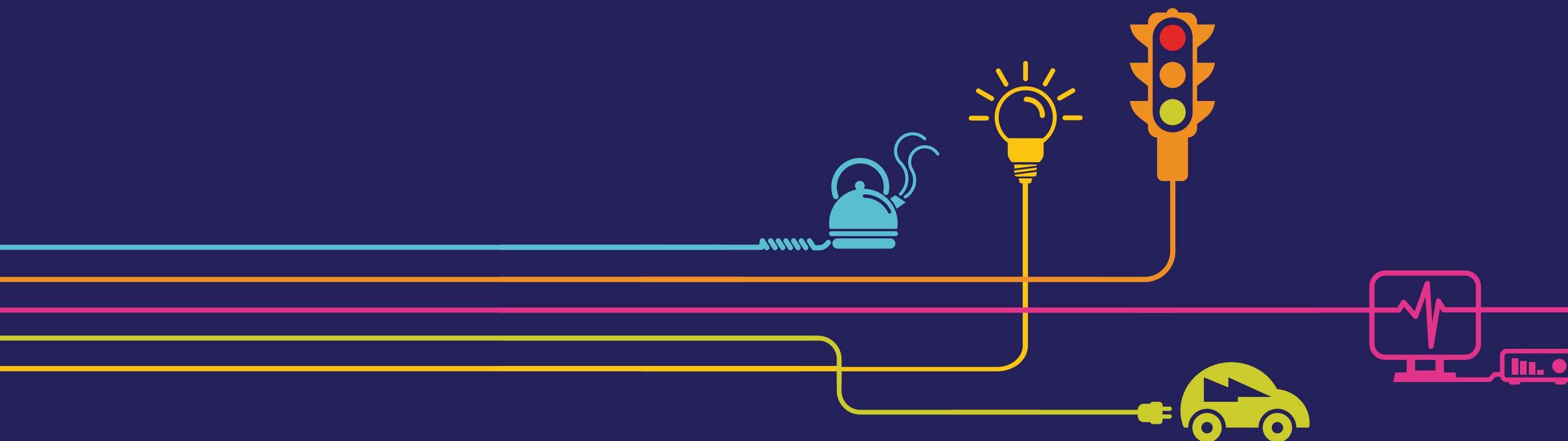


Environmental Statement Visual Effects Figure 7.7

Hinkley Point C Connection Project

*Regulation 5(2)(a) of the Infrastructure Planning
(Applications: Prescribed Forms and Procedure)
Regulations 2009*



Environmental Statement

Hinkley Point C Connection Project

5.7.3 – Visual Effects – Figures (orange highlight indicates the contents of this Volume)

Figure	Title
Volume 5.7.3.1	
7.1	Zone of Theoretical Visual Influence
7.2	Visual Receptors within 1km
Volume 5.7.3.2	
7.3	Long Distance Routes within 3km and Valued Views beyond 3km
7.4	Sequential and Representative Visual Receptors beyond 1 and 3km
Volume 5.7.3.3	
7.5	Photograph Viewpoint Locations within 1km
7.6	Section A: Photographs of Existing Views within 1km
Volume 5.7.3.4	
7.7	Section B: Photographs of Existing Views within 1km
Volume 5.7.3.5	
7.8	Section C: Photographs of Existing Views within 1km
7.9	Section D: Photographs of Existing Views within 1km
Volume 5.7.3.6	
7.10	Section E: Photographs of Existing Views within 1km
7.11	Section F: Photographs of Existing Views within 1km
Volume 5.7.3.7	
7.12	Section G: Photographs of Existing Views within 1km
7.13	Photograph Viewpoint Locations between 1 and 3km
Volume 5.7.3.8	
7.14	Photograph Viewpoint Locations beyond 3km
Volume 5.7.3.9	
7.15	Sections A: Photographs of Existing Views between 1 and 3km and beyond 3km
7.16	Section B: Photographs of Existing Views between 1 and 3km and beyond 3km
7.17	Section C: Photographs of Existing Views between 1 and 3km and beyond 3km
Volume 5.7.3.10	
7.18	Section D: Photographs of Existing Views between 1 and 3km and beyond 3km
7.19	Section E: Photographs of Existing Views between 1 and 3km and beyond 3km
7.20	Section F: Photographs of Existing Views between 1 and 3km and beyond 3km
7.21	Section G: Photographs of Existing Views between 1 and 3km and beyond 3km
7.22	Visual Receptors within 1km: Hinkley Line Entries
7.23	Sequential and Representative Visual Receptors between 1 and 3km and Valued Views beyond 3km: Hinkley Line Entries
7.24	Photograph Viewpoint Locations within 1km: Hinkley Line Entries
Volume 5.7.3.11	
7.25	Photographs of Existing Views within 1km: Hinkley Line Entries

Figure	Title
7.26	Photograph Viewpoint Locations between 1 and 3km and beyond 3km: Hinkley Line Entries
7.27	Photographs of Existing Views between 1 and 3km and beyond 3km: Hinkley Line Entries
7.28	Significance of Visual Effects on Receptors within 1km during Construction
Volume 5.7.3.12	
7.29	Significance of Visual Effects on Receptors between 1 and 3km and beyond 3km during Construction
Volume 5.7.3.13	
7.30	Significance of Visual Effects on Receptors within 1km during Operation
7.31	Significance of Visual Effects on Receptors between 1 and 3km and beyond 3km during Operation
Volume 5.7.3.14	
7.32	Bridgwater Tee CSE Compound – Landscape Mitigation and Detailed Planting Plans
7.33	South of Mendip Hills 400kV CSE Compound – Landscape Mitigation and Detailed Planting Plans
7.34	River Axe Cable Bridge Option – Landscape Mitigation and Detailed Planting Plan
7.35	Sandford 400kV/132kV Substation - Landscape Mitigation and Detailed Planting Plans
7.36	Towerhead Brook Bridge - Landscape Mitigation and Detailed Planting Plan
7.37	Significance of Visual Effects on Receptors within 1km during Construction: Hinkley Line Entries
7.38	Significance of Visual Effects on Receptors between 1 and 3km and beyond 3km during Construction: Hinkley Line Entries
7.39	Significance of Visual Effects on Receptors within 1km on Completion: Hinkley Line Entries
7.40	Significance of Visual Effects on Receptors between 1 and 3km and beyond 3km on Completion: Hinkley Line Entries

Figure 7.7 - Section B: Photographs of Existing Views within 1km



Photograph B1.1: Existing view from Crockers Hill, Woolavington looking southwest, west and northwest towards the F Route screened in places by intervening field boundary trees



Photograph B1.2 (Part 1): Existing view from Club 37 on the Western Approach Road within the former Ordnance Factory site (between Puriton and Woolavington) looking south and east towards the F Route and the route of the proposed 400kV overhead line heavily filtered by intervening trees



Photograph B1.2 (Part 2): Existing view from Club 37 on the Western Approach Road within the former Ordnance Factory site (between Puriton and Woolavington) looking south and east towards the F Route and the route of the proposed 400kV overhead line heavily filtered by intervening trees

A	22/03/2014	DCO SUBMISSION	JS	NH	NH
ISSUE	DATE	COMMENTS	DRAW	CHKD	APP'D

Title					
NATIONAL GRID (HINKLEY POINT C CONNECTION PROJECT)					
ENVIRONMENTAL STATEMENT					
VOLUME 5.7.3					
SECTION B: PHOTOGRAPHS OF EXISTING VIEWS WITHIN 1KM					

nationalgrid			
National Grid plc, Warwick Technology Park, Gallowes Hill, Warwick, CV34 6DA			
NG INVESTMENT No.	APPLICATION No.		IN
20897	EN020001		A3
FIGURE No.	DRAWING No.	SCALE	
7.7.1	IN1979.24.002	NTS	
SHEET 1 OF 44			ISSUE
			A



Photograph B1.3: Existing view from Woolavington Road adjacent properties on the eastern edge of Puriton looking south and east towards the route of the proposed 400kV overhead line beyond farmland on the lower slopes of Puriton Ridge



Photograph B1.4: Existing view from Rookery Close, Puriton looking north and east across farmland on Puriton Level towards the route of the proposed 400kV overhead line beyond the former Ordnance Factory site



Photograph B1.5: Existing view from Lower Road, Woolavington looking north between residential properties towards the F Route and the route of the proposed 400kV overhead line running across Woolavington Level



Photograph B1.6: Existing view from Mortimer Close, Woolavington looking north between residential properties towards the F Route and the route of the proposed 400kV overhead line running across Woolavington Level

A	22/03/2014	DCO SUBMISSION	JS	NH	NH
ISSUE	DATE	COMMENTS	DRAW	CHKD	APP'D

<p><u>Title</u> NATIONAL GRID (HINKLEY POINT C CONNECTION PROJECT) ENVIRONMENTAL STATEMENT VOLUME 5.7.3</p> <p>SECTION B: PHOTOGRAPHS OF EXISTING VIEWS WITHIN 1KM</p>					
--	--	--	--	--	--

<div><div></div><div>nationalgrid</div><div>National Grid plc, Warwick Technology Park, Gallows Hill, Warwick, CV34 6DA</div></div>			
NG INVESTMENT No.	APPLICATION No.		IN
20897	EN020001		A3
FIGURE No.	DRAWING No.	SCALE	
7.7.2	IN1979.24.002	NTS	
SHEET 2 OF 44			ISSUE
			A



Photograph B1.7: Existing view from The Drive, Woolavington looking west and north above and between residential properties towards the F Route (partly visible) and the route of the proposed 400kV overhead line running across Woolavington Level



Photograph B1.8 (Part 1): Existing view from the B3139 Causeway, north of Pear Tree Farm, Woolavington, looking southwest, west and north across farmland on Woolavington Level towards the F Route and the route of the proposed 400kV overhead line



Photograph B1.8 (Part 2): Existing view from the B3139 Causeway, north of Pear Tree Farm, Woolavington, looking southwest, west and north across farmland on Woolavington Level towards the F Route and the route of the proposed 400kV overhead line

A	22/03/2014	DCO SUBMISSION	JS	NH	NH
ISSUE	DATE	COMMENTS	DRAW	CHKD	APP'D

<u>Title</u> NATIONAL GRID (HINKLEY POINT C CONNECTION PROJECT) ENVIRONMENTAL STATEMENT VOLUME 5.7.3					
SECTION B: PHOTOGRAPHS OF EXISTING VIEWS WITHIN 1KM					

<div><div>nationalgrid</div><div>National Grid plc, Warwick Technology Park, Gallows Hill, Warwick, CV34 6DA</div></div>			
NG INVESTMENT No.	APPLICATION No.		IN
20897	EN020001		A3
FIGURE No.	DRAWING No.	SCALE	
7.7.3	IN1979.24.002	NTS	
SHEET 3 OF 44			ISSUE
			A



Photograph B1.9: Existing view from a track off the B3139 Causeway looking south across farmland towards Woolavington, the F Route and the route of the proposed 400kV overhead line



Photograph B1.10: Existing view from PRow BW 37/8, north of properties on Church Street, Woolavington, looking northwest, north and northeast towards the F Route and the route of the proposed 400kV overhead line partly visible above and between intervening trees



Photograph B1.11: Existing view from PRow BW 37/10, north of Reeds Drive, Woolavington looking westwards across fields divided by ditches towards the F Route and the route of the proposed 400kV overhead line

A	22/03/2014	DCO SUBMISSION	JS	NH	NH
ISSUE	DATE	COMMENTS	DRAW	CHKD	APP'D

Title NATIONAL GRID (HINKLEY POINT C CONNECTION PROJECT) ENVIRONMENTAL STATEMENT VOLUME 5.7.3					
SECTION B: PHOTOGRAPHS OF EXISTING VIEWS WITHIN 1KM					

<div><div></div><div><div><div></div><div></div></div><div><div></div><div></div></div></div><div><div></div><div></div></div><div><div></div><div></div></div></div> <div><div></div><div></div></div> <div><div></div><div></div></div> <div><div></div><div></div></div> <div><div></div><div></div></div> <div><div></div><div></div></div> <div><div></div><div></div></div> <div><div></div><div></div></div> <div><div></div><div></div></div> <div><div></div><div></div></div> <div><div></div><div></div></div> <div><div></div><div></div></div> <div><div></div><div></div></div> <div><div></div><div></div></div> <div><div></div><div></div></div> <div><div></div><div></div></div> <div><div></div><div></div></div> <div><div></div><div></div></div> <div><div></div><div></div></div> <div><div></div><div></div></div> <div><div></div><div></div></div> <div><div></div><div></div></div> <div><div></div><div></div></div> <div><div></div><div></div></div> <div><div></div><div></div></div> <div><div></div><div></div></div> <div><div></div><div></div></div> <div><div></div><div></div></div> <div><div></div><div></div></div> <div><div></div><div></div></div> <div><div></div><div></div></div> <div><div></div><div></div></div> <div><div></div><div></div></div> <div><div></div><div></div></div> <div><div></div><div></div></div> <div><div></div><div></div></div> <div><div></div><div></div></div> <div><div></div><div></div></div> <div><div></div><div></div></div> <div><div></div><div></div></div> <div><div></div><div></div></div> <div><div></div><div></div></div> <div><div></div><div></div></div> <div><div></div><div></div></div> <div><div></div><div></div></div> <div><div></div><div></div></div> <div><div></div><div></div></div> <div><div></div><div></div></div> <div><div></div><div></div></div> <div><div></div><div></div></div> <div><div></div><div></div></div> <div><div></div><div></div></div> <div><div></div><div></div></div> <div><div></div><div></div></div> <div><div></div><div></div></div> <div><div></div><div></div></div> <div><div></div><div></div></div> <div><div></div><div></div></div> <div><div></div><div></div></div> <div><div></div><div></div></div> <div><div></div><div></div></div> <div><div></div><div></div></div> <div><div></div><div></div></div> <div><div></div><div></div></div> <div><div></div><div></div></div> <div><div></div><div></div></div> <div><div></div><div></div></div> <div><div></div><div></div></div> <div><div></div><div></div></div> <div><div></div><div></div></div> <div><div></div><div></div></div> <div><div></div><div></div></div> <div><div></div><div></div></div> <div><div></div><div></div></div> <div><div></div><div></div></div> <div><div></div><div></div></div> <div><div></div><div></div></div> <div><div></div><div></div></div> <div><div></div><div></div></div> <div><div></div><div></div></div> <div><div></div><div></div></div> <div><div></div><div></div></div> <div><div></div><div></div></div> <div><div></div><div></div></div> <div><div></div><div></div></div> <div><div></div><div></div></div> <div><div></div><div></div></div> <div><div></div><div></div></div> <div><div></div><div></div></div> <div><div></div><div></div></div> <div><div></div><div></div></div> <div><div></div><div></div></div> <div><div></div><div></div></div> <div><div></div><div></div></div> <div><div></div><div></div></div> <div><div></div><div></div></div> <div><div></div><div></div></div> <div><div></div><div></div></div> <div><div></div><div></div></div> <div><div></div><div></div></div> <div><div></div><div></div></div> <div><div></div><div></div></div> <div><div></div><div></div></div> <div><div></div><div></div></div> <div><div></div><div></div></div> <div><div></div><div></div></div> <div><div></div><div></div></div> <div><div></div><div></div></div> <div><div></div><div></div></div> <div><div></div><div></div></div> <div><div></div><div></div></div> <div><div></div><div></div></div> <div><div></div><div></div></div> <div><div></div><div></div></div> <div><div></div><div></div></div> <div><div></div><div></div></div> <div><div></div><div></div></div> <div><div></div><div></div></div> <div><div></div><div></div></div> <div><div></div><div></div></div> <div><div></div><div></div></div> <div><div></div><div></div></div> <div><div></div><div></div></div> <div><div></div><div></div></div> <div><div></div><div></div></div> <div><div></div><div></div></div> <div><div></div><div></div></div> <div><div></div><div></div></div> <div><div></div><div></div></div> <div><div></div><div></div></div> <div><div></div><div></div></div> <div><div></div><div></div></div> <div><div></div><div></div></div> <div><div></div><div></div></div> <div><div></div><div></div></div> <div><div></div><div></div></div> <div><div></div><div></div></div> <div><div></div><div></div></div> <div><div></div><div></div></div> <div><div></div><div></div></div> <div><div></div><div></div></div> <div><div></div><div></div></div> <div><div></div><div></div></div> <div><div></div><div></div></div> <div><div></div><div></div></div> <div><div></div><div></div></div> <div><div></div><div></div></div> <div><div></div><div></div></div> <div><div></div><div></div></div> <div><div></div><div></div></div> <div><div></div><div></div></div> <div><div></div><div></div></div> <div><div></div><div></div></div> <div><div></div><div></div></div> <div><div></div><div></div></div> <div><div></div><div></div></div> <div><div></div><div></div></div> <div><div></div><div></div></div> <div><div></div><div></div></div> <div><div></div><div></div></div> <div><div></div><div></div></div> <div><div></div><div></div></div> <div><div></div><div></div></div> <div><div></div><div></div></div> <div><div></div><div></div></div> <div><div></div><div></div></div> <div><div></div><div></div></div> <div><div></div><div></div></div> <div><div></div><div></div></div> <div><div></div><div></div></div> <div><div></div><div></div></div> <div><div></div><div></div></div> <div><div></div><div></div></div> <div><div></div><div></div></div> <div><div></div><div></div></div> <div><div></div><div></div></div> <div><div></div><div></div></div> <div><div></div><div></div></div> <div><div></div><div></div></div> <div><div></div><div></div></div> <div><div></div><div></div></div> <div><div></div><div></div></div> <div><div></div><div></div></div> <div><div></div><div></div></div> <div><div></div><div></div></div> <div><div></div><div></div></div> <div><div></div><div></div></div> <div><div></div><div></div></div> <div><div></div><div></div></div> <div><div></div><div></div></div> <div><div></div><div></div></div> <div><div></div><div></div></div> <div><div></div><div></div></div> <div><div></div><div></div></div> <div><div></div><div></div></div> <div><div></div><div></div></div> <div><div></div><div></div></div> <div><div></div><div></div></div> <div><div></div><div></div></div> <div><div></div><div></div></div> <div><div></div><div></div></div> <div><div></div><div></div></div> <div><div></div><div></div></div> <div><div></div><div></div></div> <div><div></div><div></div></div> <div><div></div><div></div></div> <div><div></div><div></div></div> <div><div></div><div></div></div> <div><div></div><div></div></div> <div><div></div><div></div></div> <div><div></div><div></div></div> <div><div></div><div></div></div> <div><div></div><div></div></div> <div><div></div><div></div></div> <div><div></div><div></div></div> <div><div></div><div></div></div> <div><div></div><div></div></div> <div><div></div><div></div></div> <div><div></div><div></div></div> <div><div></div><div></div></div> <div><div></div><div></div></div> <div><div></div><div></div></div> <div><div></div><div></div></div> <div><div></div><div></div></div> <div><div></div><div></div></div> <div><div></div><div></div></div> <div><div></div><div></div></div> <div><div></div><div></div></div> <div><div></div><div></div></div> <div><div></div><div></div></div> <div><div></div><div></div></div> <div><div></div><div></div></div> <div><div></div><div></div></div> <div><div></div><div></div></div> <div><div></div><div></div></div> <div><div></div><div></div></div> <div><div></div><div></div></div> <div><div></div><div></div></div> <div><div></div><div></div></div> <div><div></div><div></div></div> <div><div></div><div></div></div> <div><div></div><div></div></div> <div><div></div><div></div></div> <div><div></div><div></div></div> <div><div></div><div></div></div> <div><div></div><div></div></div> <div><div></div><div></div></div> <div><div></div><div></div></div> <div><div></div><div></div></div> <div><div></div><div></div></div> <div><div></div><div></div></div> <div><div></div><div></div></div> <div><div></div><div></div></div> <div><div></div><div></div></div> <div><div></div><div></div></div> <div><div></div><div></div></div> <div><div></div><div></div></div> <div><div></div><div></div></div> <div><div></div><div></div></div> <div><div></div><div></div></div> <div><div></div><div></div></div> <div><div></div><div></div></div> <div><div></div><div></div></div> <div><div></div><div></div></div> <div><div></div><div></div></div> <div><div></div><div></div></div> <div><div></div><div></div></div> <div><div></div><div></div></div> <div><div></div><div></div></div> <div><div></div><div></div></div> <div><div></div><div></div></div> <div><div></div><div></div></div> <div><div></div><div></div></div> <div><div></div><div></div></div> <div><div></div><div></div></div> <div><div></div><div></div></div> <div><div></div><div></div></div> <div><div></div><div></div></div> <div><div></div><div></div></div> <div><div></div><div></div></div> <div><div></div><div></div></div> <div><div></div><div></div></div> <div><div></div><div></div></div> <div><div></div><div></div></div> <div><div></div><div></div></div> <div><div></div><div></div></div> <div><div></div><div></div></div> <div><div></div><div></div></div> <div><div></div><div></div></div> <div><div></div><div></div></div> <div><div></div><div></div></div> <div><div></div><div></div></div> <div><div></div><div></div></div> <div><div></div><div></div></div> <div><div></div><div></div></div> <div><div></div><div></div></div> <div><div></div><div></div></div> <div><div></div><div></div></div> <div><div></div><div></div></div> <div><div></div><div></div></div> <div><div></div><div></div></div> <div><div></div><div></div></div> <div><div></div><div></div></div> <div><div></div><div></div></div> <div><div></div><div></div></div> <div><div></div><div></div></div> <div><div></div><div></div></div> <div><div></div><div></div></div> <div><div></div><div></div></div> <div><div></div><div></div></div> <div><div></div><div></div></div> <div><div></div><div></div></div> <div><div></div><div></div></div> <div><div></div><div></div></div> <div><div></div><div></div></div> <div><div></div><div></div></div> <div><div></div><div></div></div> <div><div></div><div></div></div> <div><div></div><div></div></div> <div><div></div><div></div></div> <div><div></div><div></div></div> <div><div></div><div></div></div> <div><div></div><div></div></div> <div><div></div><div></div></div> <div><div></div><div></div></div> <div><div></div><div></div></div> <div><div></div><div></div></div> <div><div></div><div></div></div> <div><div></div><div></div></div> <div><div></div><div></div></div> <div><div></div><div></div></div> <div><div></div><div></div></div> <div><div></div><div></div></div> <div><div></div><div></div></div> <div><div></div><div></div></div> <div><div></div><div></div></div> <div><div></div><div></div></div> <div><div></div><div></div></div> <div><div></div><div></div></div> <div><div></div><div></div></div> <div><div></div><div></div></div> <div><div></div><div></div></div> <div><div></div><div></div></div> <div><div></div><div></div></div> <div><div></div><div></div></div> <div><div></div><div></div></div> <div><div></div><div></div></div> <div><div></div><div></div></div> <div><div></div><div></div></div> <div><div></div><div></div></div> <div><div></div><div></div></div> <div><div></div><div></div></div> <div><div></div><div></div></div> <div><div></div><div></div></div> <div><div></div><div></div></div> <div><div></div><div></div></div> <div><div></div><div></div></div> <div><div></div><div></div></div> <div><div></div><div></div></div> <div><div></div><div></div></div> <div><div></div><div></div></div> <div><div></div><div></div></div> <div><div></div><div></div></div> <div><div></div><div></div></div> <div><div></div><div></div></div> <div><div></div><div></div></div> <div><div></div><div></div></div> <div><div></div><div></div></div> <div><div></div><div></div></div> <div><div></div><div></div></div> <div><div></div><div></div></div> <div><div></div><div></div></div> <div><div></div><div></div></div> <div><div></div><div></div></div> <div><div></div><div></div></div> <div><div></div><div></div></div> <div><div></div><div></div></div> <div><div></div><div></div></div> <div><div></div><div></div></div> <div><div></div><div></div></div> <div><div></div><div></div></div> <div><div></div><div></div></div> <div><div></div><div></div></div> <div><div></div><div></div></div> <div><div></div><div></div></div> <div><div></div><div></div></div> <div><div></div><div></div></div> <div><div></div><div></div></div> <div><div></div><div></div></div> <div><div></div><div></div></div> <div><div></div><div></div></div> <div><div></div><div></div></div> <div><div></div><div></div></div> <div><div></div><div></div></div> <div><div></div><div></div></div> <div><div></div><div></div></div> <div><div></div><div></div></div> <div><div></div><div></div></div> <div><div></div><div></div></div> <div><div></div><div></div></div> <div><div></div><div></div></div> <div><div></div><div></div></div> <div><div></div><div></div></div> <div><div></div><</div>			
--	--	--	--



Photograph B1.12: Existing view from PRow BW 37/11 looking westwards towards the F Route and the route of the proposed 400kV overhead line beyond farmland across Woolavington Level



Photograph B1.13: Existing view from PRow BW 37/11 looking westwards across farmland along the ZG Route towards the F Route and the route of the proposed 400kV overhead line



Photograph B1.14: Existing view from PRow BW 37/12 on Middle Moor Drove at the junction with the B3139 Causeway, looking west and northwest across Woolavington Level towards the ZG Route and the F Route and towards the proposed connection between the ZG Route and the proposed 400kV overhead line

A	22/03/2014	DCO SUBMISSION	JS	NH	NH
ISSUE	DATE	COMMENTS	DRAW	CHK'D	APP'D
<div>Title</div> <div>NATIONAL GRID (HINKLEY POINT C CONNECTION PROJECT) ENVIRONMENTAL STATEMENT VOLUME 5.7.3</div> <div>SECTION B: PHOTOGRAPHS OF EXISTING VIEWS WITHIN 1KM</div>					
<div><div><div>nationalgrid</div><div>National Grid plc, Warwick Technology Park, Gallows Hill, Warwick, CV34 6DA</div></div></div>					
NG INVESTMENT No.		APPLICATION No.		IN A3	
20897		EN020001			
FIGURE No.		DRAWING No.		SCALE	
7.7.5		IN1979.24.002		NTS	
SHEET 5 OF 44				ISSUE A	



Photograph B1.15: Existing view from PRoW BW 37/13 running along Pyde Drove, looking west and north across farmland towards the F Route and the route of the proposed 400kV overhead line. The existing 400kV Hinkley to Melksham overhead line is visible in the view



Photograph B1.16: Existing view from the B3139 Causeway at the entrance to Homestead Farm looking south and southwest across farmland towards the F Route and the existing 400kV Hinkley to Melksham overhead line where these lines cross on Woolavington Level



Photograph B1.17: Existing view from the B3139 Causeway at the entrance to Homestead Farm looking west, north and northeast towards the F Route and the route of the proposed 400kV overhead line beyond Homestead Farm, farmland and in the distance beyond the Huntspill River

A	22/03/2014	DCO SUBMISSION	JS	NH	NH
ISSUE	DATE	COMMENTS	DRAW	CHKD	APP'D

Title					
NATIONAL GRID (HINKLEY POINT C CONNECTION PROJECT)					
ENVIRONMENTAL STATEMENT					
VOLUME 5.7.3					
SECTION B: PHOTOGRAPHS OF EXISTING VIEWS WITHIN 1KM					

nationalgrid					
National Grid plc, Warwick Technology Park, Galloway Hill, Warwick, CV34 6DA					
NG INVESTMENT No.	APPLICATION No.		IN		
20897	EN020001		A3		
FIGURE No.	DRAWING No.		SCALE		
7.7.6	IN1979.24.002		NTS		
SHEET 6 OF 44				ISSUE	
				A	



Photograph B1.18a: Existing view from the car park adjacent to the B3139 Causeway and the Huntspill River, looking south towards the F Route and the route of the proposed 400kV overhead line, with the ZG Route beyond and Puriton Ridge in the distance



Photograph B1.18b: Existing view from the anglers permissive footpath adjacent to the Huntspill River near to the B3139 Causeway, looking south across the river towards the F Route and the route of the proposed 400kV overhead line, with the ZG Route beyond and Puriton Ridge in the distance



Photograph B1.18c: Existing view from the car park adjacent to the B3139 Causeway and the Huntspill River, looking east and southeast towards the F Route and the route of the proposed 400kV overhead line, with the ZG Route beyond and Puriton Ridge in the distance

A	22/03/2014	DCO SUBMISSION	JS	NH	NH
ISSUE	DATE	COMMENTS	DRAW	CHKD	APP'D

Title NATIONAL GRID (HINKLEY POINT C CONNECTION PROJECT) ENVIRONMENTAL STATEMENT VOLUME 5.7.3					
SECTION B: PHOTOGRAPHS OF EXISTING VIEWS WITHIN 1KM					

<div><div></div><div><div><div></div><div></div></div><div><div></div><div></div></div></div><div><div></div><div></div></div><div><div></div><div></div></div></div> <div><div></div><div></div></div> <div><div></div><div></div></div> <div><div></div><div></div></div> <div><div></div><div></div></div> <div><div></div><div></div></div> <div><div></div><div></div></div> <div><div></div><div></div></div> <div><div></div><div></div></div> <div><div></div><div></div></div> <div><div></div><div></div></div> <div><div></div><div></div></div> <div><div></div><div></div></div> <div><div></div><div></div></div> <div><div></div><div></div></div> <div><div></div><div></div></div> <div><div></div><div></div></div> <div><div></div><div></div></div> <div><div></div><div></div></div> <div><div></div><div></div></div> <div><div></div><div></div></div> <div><div></div><div></div></div> <div><div></div><div></div></div> <div><div></div><div></div></div> <div><div></div><div></div></div> <div><div></div><div></div></div> <div><div></div><div></div></div> <div><div></div><div></div></div> <div><div></div><div></div></div> <div><div></div><div></div></div> <div><div></div><div></div></div> <div><div></div><div></div></div> <div><div></div><div></div></div> <div><div></div><div></div></div> <div><div></div><div></div></div> <div><div></div><div></div></div> <div><div></div><div></div></div> <div><div></div><div></div></div> <div><div></div><div></div></div> <div><div></div><div></div></div> <div><div></div><div></div></div> <div><div></div><div></div></div> <div><div></div><div></div></div> <div><div></div><div></div></div> <div><div></div><div></div></div> <div><div></div><div></div></div> <div><div></div><div></div></div> <div><div></div><div></div></div> <div><div></div><div></div></div> <div><div></div><div></div></div> <div><div></div><div></div></div> <div><div></div><div></div></div> <div><div></div><div></div></div> <div><div></div><div></div></div> <div><div></div><div></div></div> <div><div></div><div></div></div> <div><div></div><div></div></div> <div><div></div><div></div></div> <div><div></div><div></div></div> <div><div></div><div></div></div> <div><div></div><div></div></div> <div><div></div><div></div></div> <div><div></div><div></div></div> <div><div></div><div></div></div> <div><div></div><div></div></div> <div><div></div><div></div></div> <div><div></div><div></div></div> <div><div></div><div></div></div> <div><div></div><div></div></div> <div><div></div><div></div></div> <div><div></div><div></div></div> <div><div></div><div></div></div> <div><div></div><div></div></div> <div><div></div><div></div></div> <div><div></div><div></div></div> <div><div></div><div></div></div> <div><div></div><div></div></div> <div><div></div><div></div></div> <div><div></div><div></div></div> <div><div></div><div></div></div> <div><div></div><div></div></div> <div><div></div><div></div></div> <div><div></div><div></div></div> <div><div></div><div></div></div> <div><div></div><div></div></div> <div><div></div><div></div></div> <div><div></div><div></div></div> <div><div></div><div></div></div> <div><div></div><div></div></div> <div><div></div><div></div></div> <div><div></div><div></div></div> <div><div></div><div></div></div> <div><div></div><div></div></div> <div><div></div><div></div></div> <div><div></div><div></div></div> <div><div></div><div></div></div> <div><div></div><div></div></div> <div><div></div><div></div></div> <div><div></div><div></div></div> <div><div></div><div></div></div> <div><div></div><div></div></div> <div><div></div><div></div></div> <div><div></div><div></div></div> <div><div></div><div></div></div> <div><div></div><div></div></div> <div><div></div><div></div></div> <div><div></div><div></div></div> <div><div></div><div></div></div> <div><div></div><div></div></div> <div><div></div><div></div></div> <div><div></div><div></div></div> <div><div></div><div></div></div> <div><div></div><div></div></div> <div><div></div><div></div></div> <div><div></div><div></div></div> <div><div></div><div></div></div> <div><div></div><div></div></div> <div><div></div><div></div></div> <div><div></div><div></div></div> <div><div></div><div></div></div> <div><div></div><div></div></div> <div><div></div><div></div></div> <div><div></div><div></div></div> <div><div></div><div></div></div> <div><div></div><div></div></div> <div><div></div><div></div></div> <div><div></div><div></div></div> <div><div></div><div></div></div> <div><div></div><div></div></div> <div><div></div><div></div></div> <div><div></div><div></div></div> <div><div></div><div></div></div> <div><div></div><div></div></div> <div><div></div><div></div></div> <div><div></div><div></div></div> <div><div></div><div></div></div> <div><div></div><div></div></div> <div><div></div><div></div></div> <div><div></div><div></div></div> <div><div></div><div></div></div> <div><div></div><div></div></div> <div><div></div><div></div></div> <div><div></div><div></div></div> <div><div></div><div></div></div> <div><div></div><div></div></div> <div><div></div><div></div></div> <div><div></div><div></div></div> <div><div></div><div></div></div> <div><div></div><div></div></div> <div><div></div><div></div></div> <div><div></div><div></div></div> <div><div></div><div></div></div> <div><div></div><div></div></div> <div><div></div><div></div></div> <div><div></div><div></div></div> <div><div></div><div></div></div> <div><div></div><div></div></div> <div><div></div><div></div></div> <div><div></div><div></div></div> <div><div></div><div></div></div> <div><div></div><div></div></div> <div><div></div><div></div></div> <div><div></div><div></div></div> <div><div></div><div></div></div> <div><div></div><div></div></div> <div><div></div><div></div></div> <div><div></div><div></div></div> <div><div></div><div></div></div> <div><div></div><div></div></div> <div><div></div><div></div></div> <div><div></div><div></div></div> <div><div></div><div></div></div> <div><div></div><div></div></div> <div><div></div><div></div></div> <div><div></div><div></div></div> <div><div></div><div></div></div> <div><div></div><div></div></div> <div><div></div><div></div></div> <div><div></div><div></div></div> <div><div></div><div></div></div> <div><div></div><div></div></div> <div><div></div><div></div></div> <div><div></div><div></div></div> <div><div></div><div></div></div> <div><div></div><div></div></div> <div><div></div><div></div></div> <div><div></div><div></div></div> <div><div></div><div></div></div> <div><div></div><div></div></div> <div><div></div><div></div></div> <div><div></div><div></div></div> <div><div></div><div></div></div> <div><div></div><div></div></div> <div><div></div><div></div></div> <div><div></div><div></div></div> <div><div></div><div></div></div> <div><div></div><div></div></div> <div><div></div><div></div></div> <div><div></div><div></div></div> <div><div></div><div></div></div> <div><div></div><div></div></div> <div><div></div><div></div></div> <div><div></div><div></div></div> <div><div></div><div></div></div> <div><div></div><div></div></div> <div><div></div><div></div></div> <div><div></div><div></div></div> <div><div></div><div></div></div> <div><div></div><div></div></div> <div><div></div><div></div></div> <div><div></div><div></div></div> <div><div></div><div></div></div> <div><div></div><div></div></div> <div><div></div><div></div></div> <div><div></div><div></div></div> <div><div></div><div></div></div> <div><div></div><div></div></div> <div><div></div><div></div></div> <div><div></div><div></div></div> <div><div></div><div></div></div> <div><div></div><div></div></div> <div><div></div><div></div></div> <div><div></div><div></div></div> <div><div></div><div></div></div> <div><div></div><div></div></div> <div><div></div><div></div></div> <div><div></div><div></div></div> <div><div></div><div></div></div> <div><div></div><div></div></div> <div><div></div><div></div></div> <div><div></div><div></div></div> <div><div></div><div></div></div> <div><div></div><div></div></div> <div><div></div><div></div></div> <div><div></div><div></div></div> <div><div></div><div></div></div> <div><div></div><div></div></div> <div><div></div><div></div></div> <div><div></div><div></div></div> <div><div></div><div></div></div> <div><div></div><div></div></div> <div><div></div><div></div></div> <div><div></div><div></div></div> <div><div></div><div></div></div> <div><div></div><div></div></div> <div><div></div><div></div></div> <div><div></div><div></div></div> <div><div></div><div></div></div> <div><div></div><div></div></div> <div><div></div><div></div></div> <div><div></div><div></div></div> <div><div></div><div></div></div> <div><div></div><div></div></div> <div><div></div><div></div></div> <div><div></div><div></div></div> <div><div></div><div></div></div> <div><div></div><div></div></div> <div><div></div><div></div></div> <div><div></div><div></div></div> <div><div></div><div></div></div> <div><div></div><div></div></div> <div><div></div><div></div></div> <div><div></div><div></div></div> <div><div></div><div></div></div> <div><div></div><div></div></div> <div><div></div><div></div></div> <div><div></div><div></div></div> <div><div></div><div></div></div> <div><div></div><div></div></div> <div><div></div><div></div></div> <div><div></div><div></div></div> <div><div></div><div></div></div> <div><div></div><div></div></div> <div><div></div><div></div></div> <div><div></div><div></div></div> <div><div></div><div></div></div> <div><div></div><div></div></div> <div><div></div><div></div></div> <div><div></div><div></div></div> <div><div></div><div></div></div> <div><div></div><div></div></div> <div><div></div><div></div></div> <div><div></div><div></div></div> <div><div></div><div></div></div> <div><div></div><div></div></div> <div><div></div><div></div></div> <div><div></div><div></div></div> <div><div></div><div></div></div> <div><div></div><div></div></div> <div><div></div><div></div></div> <div><div></div><div></div></div> <div><div></div><div></div></div> <div><div></div><div></div></div> <div><div></div><div></div></div> <div><div></div><div></div></div> <div><div></div><div></div></div> <div><div></div><div></div></div> <div><div></div><div></div></div> <div><div></div><div></div></div> <div><div></div><div></div></div> <div><div></div><div></div></div> <div><div></div><div></div></div> <div><div></div><div></div></div> <div><div></div><div></div></div> <div><div></div><div></div></div> <div><div></div><div></div></div> <div><div></div><div></div></div> <div><div></div><div></div></div> <div><div></div><div></div></div> <div><div></div><div></div></div> <div><div></div><div></div></div> <div><div></div><div></div></div> <div><div></div><div></div></div> <div><div></div><div></div></div> <div><div></div><div></div></div> <div><div></div><div></div></div> <div><div></div><div></div></div> <div><div></div><div></div></div> <div><div></div><div></div></div> <div><div></div><div></div></div> <div><div></div><div></div></div> <div><div></div><div></div></div> <div><div></div><div></div></div> <div><div></div><div></div></div> <div><div></div><div></div></div> <div><div></div><div></div></div> <div><div></div><div></div></div> <div><div></div><div></div></div> <div><div></div><div></div></div> <div><div></div><div></div></div> <div><div></div><div></div></div> <div><div></div><div></div></div> <div><div></div><div></div></div> <div><div></div><div></div></div> <div><div></div><div></div></div> <div><div></div><div></div></div> <div><div></div><div></div></div> <div><div></div></div>			
--	--	--	--



Photograph B1.18d: Existing view from the car park adjacent to the B3139 Causeway and the Huntspill River, looking northeast towards the F Route and the route of the proposed 400kV overhead line



Photograph B1.19: Existing view from Cornmoor Lane near the entrance to Cornmoor Farm Wall looking eastwards across farmland on Huntspill Moor towards the F Route and the route of the proposed 400kV overhead line, above intervening field boundary hedgerow and trees



Photograph B1.20: Existing view from Burtle Road and National Cycle Route 33 looking southwest across farmland north of the Huntspill River, towards the route of the proposed 400kV overhead line and the F Route, above and between intervening field boundary hedgerow and trees

A	22/03/2014	DCO SUBMISSION	JS	NH	NH
ISSUE	DATE	COMMENTS	DRAW	CHKD	APP'D

<u>Title</u> NATIONAL GRID (HINKLEY POINT C CONNECTION PROJECT) ENVIRONMENTAL STATEMENT VOLUME 5.7.3 SECTION B: PHOTOGRAPHS OF EXISTING VIEWS WITHIN 1KM					
--	--	--	--	--	--

nationalgrid <small>National Grid plc, Warwick Technology Park, Galloway Hill, Warwick, CV34 6DA</small>					
NG INVESTMENT No.	APPLICATION No.		IN		
20897	EN020001		A3		
FIGURE No.	DRAWING No.		SCALE		
7.7.8	IN1979.24.002		NTS		
SHEET 8 OF 44				ISSUE	
				A	



Photograph B1.21: Existing view from Burtle Road and National Cycle Route 33 east of Cote looking northwest and north towards the route of the proposed 400kV overhead line across Huntspill Moor and towards the F Route beyond



Photograph B1.22: Existing view from Burtle Road and National Cycle Route 33, near Red House, looking northwest across farmland on Huntspill Moor towards the route of the proposed 400kV overhead line and the F Route beyond



Photograph B1.23: Existing view from Long Moor Drove looking west along this road towards the route of the proposed 400kV overhead line and the F Route above and between intervening hedgerow and trees



Photograph B1.24 (Part 1): Existing view from Burtle Road, near a road junction at Cote, looking northwest, north and northeast towards the F Route and properties at Cote

A	22/03/2014	DCO SUBMISSION	JS	NH	NH
ISSUE	DATE	COMMENTS	DRAW	CHKD	APP'D

Title NATIONAL GRID (HINKLEY POINT C CONNECTION PROJECT) ENVIRONMENTAL STATEMENT VOLUME 5.7.3 SECTION B: PHOTOGRAPHS OF EXISTING VIEWS WITHIN 1KM					
--	--	--	--	--	--

<div><div></div><div><div><div></div><div></div><div></div></div><div><div></div><div></div><div></div></div><div><div></div><div></div><div></div></div></div><div><div></div><div></div><div></div></div><div><div></div><div></div><div></div></div></div> <div><div></div><div></div><div></div></div> <div><div></div><div></div><div></div></div> <div><div></div><div></div><div></div></div> <div><div></div><div></div><div></div></div> <div><div></div><div></div><div></div></div> <div><div></div><div></div><div></div></div> <div><div></div><div></div><div></div></div> <div><div></div><div></div><div></div></div> <div><div></div><div></div><div></div></div> <div><div></div><div></div><div></div></div> <div><div></div><div></div><div></div></div> <div><div></div><div></div><div></div></div> <div><div></div><div></div><div></div></div> <div><div></div><div></div><div></div></div> <div><div></div><div></div><div></div></div> <div><div></div><div></div><div></div></div> <div><div></div><div></div><div></div></div> <div><div></div><div></div><div></div></div> <div><div></div><div></div><div></div></div> <div><div></div><div></div><div></div></div> <div><div></div><div></div><div></div></div> <div><div></div><div></div><div></div></div> <div><div></div><div></div><div></div></div> <div><div></div><div></div><div></div></div> <div><div></div><div></div><div></div></div> <div><div></div><div></div><div></div></div> <div><div></div><div></div><div></div></div> <div><div></div><div></div><div></div></div> <div><div></div><div></div><div></div></div> <div><div></div><div></div><div></div></div> <div><div></div><div></div><div></div></div> <div><div></div><div></div><div></div></div> <div><div></div><div></div><div></div></div> <div><div></div><div></div><div></div></div> <div><div></div><div></div><div></div></div> <div><div></div><div></div><div></div></div> <div><div></div><div></div><div></div></div> <div><div></div><div></div><div></div></div> <div><div></div><div></div><div></div></div> <div><div></div><div></div><div></div></div> <div><div></div><div></div><div></div></div> <div><div></div><div></div><div></div></div> <div><div></div><div></div><div></div></div> <div><div></div><div></div><div></div></div> <div><div></div><div></div><div></div></div> <div><div></div><div></div><div></div></div> <div><div></div><div></div><div></div></div> <div><div></div><div></div><div></div></div> <div><div></div><div></div><div></div></div> <div><div></div><div></div><div></div></div> <div><div></div><div></div><div></div></div> <div><div></div><div></div><div></div></div> <div><div></div><div></div><div></div></div> <div><div></div><div></div><div></div></div> <div><div></div><div></div><div></div></div> <div><div></div><div></div><div></div></div> <div><div></div><div></div><div></div></div> <div><div></div><div></div><div></div></div> <div><div></div><div></div><div></div></div> <div><div></div><div></div><div></div></div> <div><div></div><div></div><div></div></div> <div><div></div><div></div><div></div></div> <div><div></div><div></div><div></div></div> <div><div></div><div></div><div></div></div> <div><div></div><div></div><div></div></div> <div><div></div><div></div><div></div></div> <div><div></div><div></div><div></div></div> <div><div></div><div></div><div></div></div> <div><div></div><div></div><div></div></div> <div><div></div><div></div><div></div></div> <div><div></div><div></div><div></div></div> <div><div></div><div></div><div></div></div> <div><div></div><div></div><div></div></div> <div><div></div><div></div><div></div></div> <div><div></div><div></div><div></div></div> <div><div></div><div></div><div></div></div> <div><div></div><div></div><div></div></div> <div><div></div><div></div><div></div></div> <div><div></div><div></div><div></div></div> <div><div></div><div></div><div></div></div> <div><div></div><div></div><div></div></div> <div><div></div><div></div><div></div></div> <div><div></div><div></div><div></div></div> <div><div></div><div></div><div></div></div> <div><div></div><div></div><div></div></div> <div><div></div><div></div><div></div></div> <div><div></div><div></div><div></div></div> <div><div></div><div></div><div></div></div> <div><div></div><div></div><div></div></div> <div><div></div><div></div><div></div></div> <div><div></div><div></div><div></div></div> <div><div></div><div></div><div></div></div> <div><div></div><div></div><div></div></div> <div><div></div><div></div><div></div></div> <div><div></div><div></div><div></div></div> <div><div></div><div></div><div></div></div> <div><div></div><div></div><div></div></div> <div><div></div><div></div><div></div></div> <div><div></div><div></div><div></div></div> <div><div></div><div></div><div></div></div> <div><div></div><div></div><div></div></div> <div><div></div><div></div><div></div></div> <div><div></div><div></div><div></div></div> <div><div></div><div></div><div></div></div> <div><div></div><div></div><div></div></div> <div><div></div><div></div><div></div></div> <div><div></div><div></div><div></div></div> <div><div></div><div></div><div></div></div> <div><div></div><div></div><div></div></div> <div><div></div><div></div><div></div></div> <div><div></div><div></div><div></div></div> <div><div></div><div></div><div></div></div> <div><div></div><div></div><div></div></div> <div><div></div><div></div><div></div></div> <div><div></div><div></div><div></div></div> <div><div></div><div></div><div></div></div> <div><div></div><div></div><div></div></div> <div><div></div><div></div><div></div></div> <div><div></div><div></div><div></div></div> <div><div></div><div></div><div></div></div> <div><div></div><div></div><div></div></div> <div><div></div><div></div><div></div></div> <div><div></div><div></div><div></div></div> <div><div></div><div></div><div></div></div> <div><div></div><div></div><div></div></div> <div><div></div><div></div><div></div></div> <div><div></div><div></div><div></div></div> <div><div></div><div></div><div></div></div> <div><div></div><div></div><div></div></div> <div><div></div><div></div><div></div></div> <div><div></div><div></div><div></div></div> <div><div></div><div></div><div></div></div> <div><div></div><div></div><div></div></div> <div><div></div><div></div><div></div></div> <div><div></div><div></div><div></div></div> <div><div></div><div></div><div></div></div> <div><div></div><div></div><div></div></div> <div><div></div><div></div><div></div></div> <div><div></div><div></div><div></div></div> <div><div></div><div></div><div></div></div> <div><div></div><div></div><div></div></div> <div><div></div><div></div><div></div></div> <div><div></div><div></div><div></div></div> <div><div></div><div></div><div></div></div> <div><div></div><div></div><div></div></div> <div><div></div><div></div><div></div></div> <div><div></div><div></div><div></div></div> <div><div></div><div></div><div></div></div> <div><div></div><div></div><div></div></div> <div><div></div><div></div><div></div></div> <div><div></div><div></div><div></div></div> <div><div></div><div></div><div></div></div> <div><div></div><div></div><div></div></div> <div><div></div><div></div><div></div></div> <div><div></div><div></div><div></div></div> <div><div></div><div></div><div></div></div> <div><div></div><div></div><div></div></div> <div><div></div><div></div><div></div></div> <div><div></div><div></div><div></div></div> <div><div></div><div></div><div></div></div> <div><div></div><div></div><div></div></div> <div><div></div><div></div><div></div></div> <div><div></div><div></div><div></div></div> <div><div></div><div></div><div></div></div> <div><div></div><div></div><div></div></div> <div><div></div><div></div><div></div></div> <div><div></div><div></div><div></div></div> <div><div></div><div></div><div></div></div> <div><div></div><div></div><div></div></div> <div><div></div><div></div><div></div></div> <div><div></div><div></div><div></div></div> <div><div></div><div></div><div></div></div> <div><div></div><div></div><div></div></div> <div><div></div><div></div><div></div></div> <div><div></div><div></div><div></div></div> <div><div></div><div></div><div></div></div> <div><div></div><div></div><div></div></div> <div><div></div><div></div><div></div></div> <div><div></div><div></div><div></div></div> <div><div></div><div></div><div></div></div> <div><div></div><div></div><div></div></div> <div><div></div><div></div><div></div></div> <div><div></div><div></div><div></div></div> <div><div></div><div></div><div></div></div> <div><div></div><div></div><div></div></div> <div><div></div><div></div><div></div></div> <div><div></div><div></div><div></div></div> <div><div></div><div></div><div></div></div> <div><div></div><div></div><div></div></div> <div><div></div><div></div><div></div></div> <div><div></div><div></div><div></div></div> <div><div></div><div></div><div></div></div> <div><div></div><div></div><div></div></div> <div><div></div><div></div><div></div></div> <div><div></div><div></div><div></div></div> <div><div></div><div></div><div></div></div> <div><div></div><div></div><div></div></div> <div><div></div><div></div><div></div></div> <div><div></div><div></div><div></div></div> <div><div></div><div></div><div></div></div> <div><div></div><div></div><div></div></div> <div><div></div><div></div><div></div></div> <div><div></div><div></div><div></div></div> <div><div></div><div></div><div></div></div> <div><div></div><div></div><div></div></div> <div><div></div><div></div><div></div></div> <div><div></div><div></div><div></div></div> <div><div></div><div></div><div></div></div> <div><div></div><div></div><div></div></div> <div><div></div><div></div><div></div></div> <div><div></div><div></div><div></div></div> <div><div></div><div></div><div></div></div> <div><div></div><div></div><div></div></div> <div><div></div><div></div><div></div></div> <div><div></div><div></div><div></div></div> <div><div></div><div></div><div></div></div> <div><div></div><div></div><div></div></div> <div><div></div><div></div><div></div></div> <div><div></div><div></div><div></div></div> <div><div></div><div></div><div></div></div> <div><div></div><div></div><div></div></div> <div><div></div><div></div><div></div></div> <div><div></div><div></div><div></div></div> <div><div></div><div></div><div></div></div> <div><div></div><div></div><div></div></div> <div><div></div><div></div><div></div></div> <div><div></div><div></div><div></div></div> <div><div></div><div></div><div></div></div> <div><div></div><div></div><div></div></div> <div><div></div><div></div><div></div></div> <div><div></div><div></div><div></div></div> <div><div></div><div></div><div></div></div> <div><div></div><div></div><div></div></div> <div><div></div><div></div><div></div></div> <div><div></div><div></div><div></div></div> <div><div></div><div></div><div></div></div> <div><div></div><div></div><div></div></div> <div><div></div><div></div><div></div></div> <div><div></div><div></div><div></div></div> <div><div></div><div></div><div></div></div> <div><div></div><div></div><div></div></div> <div><div></div><div></div><div></div></div> <div><div></div><div></div><div></div></div> <div><div></div><div></div><div></div></div> <div><div></div><div></div><div></div></div> <div><div></div><div></div><div></div></div> <div><div></div><div></div><div></div></div> <div><div></div><div></div><div></div></div> <div><div></div><div></div><div></div></div> <div><div></div><div></div><div></div></div> <div><div></div><div></div><div></div></div> <div><div></div><div></div><div></div></div> <div><div></div><div></div><div></div></div> <div><div></div><div></div><div></div></div> <div><div></div><div></div><div></div></div> <div><div></div><div></div><div></div></div> <div><div></div><div></div><div></div></div> <div><div></div><div></div><div></div></div> <div></div>			
---	--	--	--



Photograph B1.24 (Part 2): Existing view from Burtle Road, near a road junction at Cote, looking northwest, north and northeast towards the F Route and properties at Cote



Photograph B1.25: Existing view from Whitehouse Lane looking northeast, east and south towards the F Route running across Huntspill Moor and between properties at Cote



Photograph B1.26: Existing view from PRow BW13/22 looking northeast, east and south towards the F Route running across Huntspill Moor

A	22/03/2014	DCO SUBMISSION	JS	NH	NH
ISSUE	DATE	COMMENTS	DRAW	CHKD	APP'D

Title NATIONAL GRID (HINKLEY POINT C CONNECTION PROJECT) ENVIRONMENTAL STATEMENT VOLUME 5.7.3					
SECTION B: PHOTOGRAPHS OF EXISTING VIEWS WITHIN 1KM					

<div><div></div><div><div><div></div><div></div></div><div><div></div><div></div></div></div><div><div></div><div></div></div><div><div></div><div></div></div></div> <div><div></div><div></div></div> <div><div></div><div></div></div> <div><div></div><div></div></div> <div><div></div><div></div></div> <div><div></div><div></div></div> <div><div></div><div></div></div> <div><div></div><div></div></div> <div><div></div><div></div></div> <div><div></div><div></div></div> <div><div></div><div></div></div> <div><div></div><div></div></div> <div><div></div><div></div></div> <div><div></div><div></div></div> <div><div></div><div></div></div> <div><div></div><div></div></div> <div><div></div><div></div></div> <div><div></div><div></div></div> <div><div></div><div></div></div> <div><div></div><div></div></div> <div><div></div><div></div></div> <div><div></div><div></div></div> <div><div></div><div></div></div> <div><div></div><div></div></div> <div><div></div><div></div></div> <div><div></div><div></div></div> <div><div></div><div></div></div> <div><div></div><div></div></div> <div><div></div><div></div></div> <div><div></div><div></div></div> <div><div></div><div></div></div> <div><div></div><div></div></div> <div><div></div><div></div></div> <div><div></div><div></div></div> <div><div></div><div></div></div> <div><div></div><div></div></div> <div><div></div><div></div></div> <div><div></div><div></div></div> <div><div></div><div></div></div> <div><div></div><div></div></div> <div><div></div><div></div></div> <div><div></div><div></div></div> <div><div></div><div></div></div> <div><div></div><div></div></div> <div><div></div><div></div></div> <div><div></div><div></div></div> <div><div></div><div></div></div> <div><div></div><div></div></div> <div><div></div><div></div></div> <div><div></div><div></div></div> <div><div></div><div></div></div> <div><div></div><div></div></div> <div><div></div><div></div></div> <div><div></div><div></div></div> <div><div></div><div></div></div> <div><div></div><div></div></div> <div><div></div><div></div></div> <div><div></div><div></div></div> <div><div></div><div></div></div> <div><div></div><div></div></div> <div><div></div><div></div></div> <div><div></div><div></div></div> <div><div></div><div></div></div> <div><div></div><div></div></div> <div><div></div><div></div></div> <div><div></div><div></div></div> <div><div></div><div></div></div> <div><div></div><div></div></div> <div><div></div><div></div></div> <div><div></div><div></div></div> <div><div></div><div></div></div> <div><div></div><div></div></div> <div><div></div><div></div></div> <div><div></div><div></div></div> <div><div></div><div></div></div> <div><div></div><div></div></div> <div><div></div><div></div></div> <div><div></div><div></div></div> <div><div></div><div></div></div> <div><div></div><div></div></div> <div><div></div><div></div></div> <div><div></div><div></div></div> <div><div></div><div></div></div> <div><div></div><div></div></div> <div><div></div><div></div></div> <div><div></div><div></div></div> <div><div></div><div></div></div> <div><div></div><div></div></div> <div><div></div><div></div></div> <div><div></div><div></div></div> <div><div></div><div></div></div> <div><div></div><div></div></div> <div><div></div><div></div></div> <div><div></div><div></div></div> <div><div></div><div></div></div> <div><div></div><div></div></div> <div><div></div><div></div></div> <div><div></div><div></div></div> <div><div></div><div></div></div> <div><div></div><div></div></div> <div><div></div><div></div></div> <div><div></div><div></div></div> <div><div></div><div></div></div> <div><div></div><div></div></div> <div><div></div><div></div></div> <div><div></div><div></div></div> <div><div></div><div></div></div> <div><div></div><div></div></div> <div><div></div><div></div></div> <div><div></div><div></div></div> <div><div></div><div></div></div> <div><div></div><div></div></div> <div><div></div><div></div></div> <div><div></div><div></div></div> <div><div></div><div></div></div> <div><div></div><div></div></div> <div><div></div><div></div></div> <div><div></div><div></div></div> <div><div></div><div></div></div> <div><div></div><div></div></div> <div><div></div><div></div></div> <div><div></div><div></div></div> <div><div></div><div></div></div> <div><div></div><div></div></div> <div><div></div><div></div></div> <div><div></div><div></div></div> <div><div></div><div></div></div> <div><div></div><div></div></div> <div><div></div><div></div></div> <div><div></div><div></div></div> <div><div></div><div></div></div> <div><div></div><div></div></div> <div><div></div><div></div></div> <div><div></div><div></div></div> <div><div></div><div></div></div> <div><div></div><div></div></div> <div><div></div><div></div></div> <div><div></div><div></div></div> <div><div></div><div></div></div> <div><div></div><div></div></div> <div><div></div><div></div></div> <div><div></div><div></div></div> <div><div></div><div></div></div> <div><div></div><div></div></div> <div><div></div><div></div></div> <div><div></div><div></div></div> <div><div></div><div></div></div> <div><div></div><div></div></div> <div><div></div><div></div></div> <div><div></div><div></div></div> <div><div></div><div></div></div> <div><div></div><div></div></div> <div><div></div><div></div></div> <div><div></div><div></div></div> <div><div></div><div></div></div> <div><div></div><div></div></div> <div><div></div><div></div></div> <div><div></div><div></div></div> <div><div></div><div></div></div> <div><div></div><div></div></div> <div><div></div><div></div></div> <div><div></div><div></div></div> <div><div></div><div></div></div> <div><div></div><div></div></div> <div><div></div><div></div></div> <div><div></div><div></div></div> <div><div></div><div></div></div> <div><div></div><div></div></div> <div><div></div><div></div></div> <div><div></div><div></div></div> <div><div></div><div></div></div> <div><div></div><div></div></div> <div><div></div><div></div></div> <div><div></div><div></div></div> <div><div></div><div></div></div> <div><div></div><div></div></div> <div><div></div><div></div></div> <div><div></div><div></div></div> <div><div></div><div></div></div> <div><div></div><div></div></div> <div><div></div><div></div></div> <div><div></div><div></div></div> <div><div></div><div></div></div> <div><div></div><div></div></div> <div><div></div><div></div></div> <div><div></div><div></div></div> <div><div></div><div></div></div> <div><div></div><div></div></div> <div><div></div><div></div></div> <div><div></div><div></div></div> <div><div></div><div></div></div> <div><div></div><div></div></div> <div><div></div><div></div></div> <div><div></div><div></div></div> <div><div></div><div></div></div> <div><div></div><div></div></div> <div><div></div><div></div></div> <div><div></div><div></div></div> <div><div></div><div></div></div> <div><div></div><div></div></div> <div><div></div><div></div></div> <div><div></div><div></div></div> <div><div></div><div></div></div> <div><div></div><div></div></div> <div><div></div><div></div></div> <div><div></div><div></div></div> <div><div></div><div></div></div> <div><div></div><div></div></div> <div><div></div><div></div></div> <div><div></div><div></div></div> <div><div></div><div></div></div> <div><div></div><div></div></div> <div><div></div><div></div></div> <div><div></div><div></div></div> <div><div></div><div></div></div> <div><div></div><div></div></div> <div><div></div><div></div></div> <div><div></div><div></div></div> <div><div></div><div></div></div> <div><div></div><div></div></div> <div><div></div><div></div></div> <div><div></div><div></div></div> <div><div></div><div></div></div> <div><div></div><div></div></div> <div><div></div><div></div></div> <div><div></div><div></div></div> <div><div></div><div></div></div> <div><div></div><div></div></div> <div><div></div><div></div></div> <div><div></div><div></div></div> <div><div></div><div></div></div> <div><div></div><div></div></div> <div><div></div><div></div></div> <div><div></div><div></div></div> <div><div></div><div></div></div> <div><div></div><div></div></div> <div><div></div><div></div></div> <div><div></div><div></div></div> <div><div></div><div></div></div> <div><div></div><div></div></div> <div><div></div><div></div></div> <div><div></div><div></div></div> <div><div></div><div></div></div> <div><div></div><div></div></div> <div><div></div><div></div></div> <div><div></div><div></div></div> <div><div></div><div></div></div> <div><div></div><div></div></div> <div><div></div><div></div></div> <div><div></div><div></div></div> <div><div></div><div></div></div> <div><div></div><div></div></div> <div><div></div><div></div></div> <div><div></div><div></div></div> <div><div></div><div></div></div> <div><div></div><div></div></div> <div><div></div><div></div></div> <div><div></div><div></div></div> <div><div></div><div></div></div> <div><div></div><div></div></div> <div><div></div><div></div></div> <div><div></div><div></div></div> <div><div></div><div></div></div> <div><div></div><div></div></div> <div><div></div><div></div></div> <div><div></div><div></div></div> <div><div></div><div></div></div> <div><div></div><div></div></div> <div><div></div><div></div></div> <div><div></div><div></div></div> <div><div></div><div></div></div> <div><div></div><div></div></div> <div><div></div><div></div></div> <div><div></div><div></div></div> <div><div></div><div></div></div> <div><div></div><div></div></div> <div><div></div><div></div></div> <div><div></div><div></div></div> <div><div></div><div></div></div> <div><div></div><div></div></div> <div><div></div><div></div></div> <div><div></div><div></div></div> <div><div></div><div></div></div> <div><div></div><div></div></div> <div><div></div><div></div></div> <div><div></div><div></div></div> <div><div></div><div></div></div> <div><div></div><div></div></div> <div><div></div><div></div></div> <div><div></div><div></div></div> <div><div></div><div></div></div> <div><div></div><div></div></div> <div><div></div><div></div></div> <div><div></div><div></div></div> <div><div></div><div></div></div> <div><div></div><div></div></div> <div><div></div><div></div></div> <div><div></div><div></div></div> <div><div></div><div></div></div> <div><div></div><div></div></div> <div><div></div><div></div></div> <div><div></div><div></div></div> <div><div></div><div></div></div> <div><div></div><div></div></div> <div><div></div><div></div></div> <div><div></div><div></div></div> <div><div></div><div></div></div> <div><div></div><div></div></div> <div><div></div><div></div></div> <div><div></div><div></div></div> <div><div></div><div></div></div> <div><div></div><div></div></div> <div><div></div><div></div></div> <div><div></div><div></div></div> <div><div></div><div></div></div> <div><div></div><div></div></div> <div><div></div><div></div></div> <div><div></div><div></div></div> <div><div></div><div></div></div> <div><div></div><div></div></div> <div><div></div><div></div></div> <div><div></div><div></div></div> <div><div></div><div></div></div> <div><div></div><div></div></div> <div><div></div><div></div></div> <div><div></div><div></div></div> <div><div></div><div></div></div> <div><div></div><div></div></div> <div><div></div><div></div></div> <div><div></div><div></div></div> <div><div></div><div></div></div> <div><div></div><div></div></div> <div><div></div><div></div></div> <div><div></div><div></div></div> <div><div></div><div></div></div> <div><div></div><div></div></div> <div><div></div><div></div></div> <div><div></div><div></div></div> <div><div></div><div></div></div> <div><div></div></div>			
--	--	--	--



Photograph B1.27: Existing view from PRow BW13/28 looking southeast and south towards the F Route beyond farmland, above intervening hedgerows and trees



Photograph B1.28: Existing view from PRow BW13/28 looking northeast, east and southeast towards the F Route beyond farmland inbetween intervening trees



Photograph B1.29: Existing view from Merry Lane adjacent Moor Row, looking northeast, east and southeast towards the F Route in the vicinity of Moor Row

A	22/03/2014	DCO SUBMISSION	JS	NH	NH
ISSUE	DATE	COMMENTS	DRAW	CHKD	APP'D

<u>Title</u> NATIONAL GRID (HINKLEY POINT C CONNECTION PROJECT) ENVIRONMENTAL STATEMENT VOLUME 5.7.3					
SECTION B: PHOTOGRAPHS OF EXISTING VIEWS WITHIN 1KM					

nationalgrid			National Grid plc, Warwick Technology Park, Gallow's Hill, Warwick, CV34 6DA		
NG INVESTMENT No.	APPLICATION No.		IN		
20897	EN020001		A3		
FIGURE No.	DRAWING No.		SCALE		
7.7.11	IN1979.24.002		NTS		
SHEET 11 OF 44				ISSUE	
				A	



Photograph B1.30: Existing view from Merry Lane leading to Cripps Farm looking southeast and south towards the route of the proposed 400kV overhead line to the north and south of Merry Lane. The view includes caravans visible on the western edge of Cripps Farm Caravan Park through a gap in intervening hedgerow



Photograph B1.31: Existing view from Merry Lane leading to Cripps Farm looking northeast and southeast towards the route of the proposed 400kV overhead line above intervening field hedgerow and trees



Photograph B1.32: Existing view from Southwick Road at the entrance to Elm Tree Farm looking northeast towards the F Route

A	22/03/2014	DCO SUBMISSION	JS	NH	NH
ISSUE	DATE	COMMENTS	DRAW	CHKD	APP'D

<u>Title</u> NATIONAL GRID (HINKLEY POINT C CONNECTION PROJECT) ENVIRONMENTAL STATEMENT VOLUME 5.7.3 SECTION B: PHOTOGRAPHS OF EXISTING VIEWS WITHIN 1KM					
--	--	--	--	--	--

<div><div><div>nationalgrid</div><div>National Grid plc, Warwick Technology Park, Gallow's Hill, Warwick, CV34 6DA</div></div></div>			
NG INVESTMENT No.	APPLICATION No.		IN
20897	EN020001		A3
FIGURE No.	DRAWING No.	SCALE	
7.7.12	IN1979.24.002	NTS	
SHEET 12 OF 44			ISSUE
			A



Photograph B1.33: Existing view from Southwick Road looking northeast and southeast along the route of PRow AX23/3 across adjacent fields, and towards the route of the proposed 400kV overhead line across farmland and beyond Southwick Farm



Photograph B1.34: Existing view from Southwick Road north of the entrance to Southwick Farm looking northeast towards the route of the proposed 400kV overhead line across farmland



Photograph B1.35: Existing view from Southwick Road looking southwest to southeast across farmland towards the route of the proposed 400kV overhead line

A	22/03/2014	DCO SUBMISSION	JS	NH	NH
ISSUE	DATE	COMMENTS	DRAW	CHKD	APP'D

<u>Title</u> NATIONAL GRID (HINKLEY POINT C CONNECTION PROJECT) ENVIRONMENTAL STATEMENT VOLUME 5.7.3 SECTION B: PHOTOGRAPHS OF EXISTING VIEWS WITHIN 1KM					
--	--	--	--	--	--

<div><div><div></div><div></div></div><div><div></div><div></div></div></div> <div><div><div></div><div></div></div><div><div></div><div></div></div></div> <div><div><div></div><div></div></div><div><div></div><div></div></div></div> <div><div><div></div><div></div></div><div><div></div><div></div></div></div> <div><div><div></div><div></div></div><div><div></div><div></div></div></div> <div><div><div></div><div></div></div><div><div></div><div></div></div></div> <div><div><div></div><div></div></div><div><div></div><div></div></div></div> <div><div><div></div><div></div></div><div><div></div><div></div></div></div> <div><div><div></div><div></div></div><div><div></div><div></div></div></div> <div><div><div></div><div></div></div><div><div></div><div></div></div></div> <div><div><div></div><div></div></div><div><div></div><div></div></div></div> <div><div><div></div><div></div></div><div><div></div><div></div></div></div> <div><div><div></div><div></div></div><div><div></div><div></div></div></div> <div><div><div></div><div></div></div><div><div></div><div></div></div></div> <div><div><div></div><div></div></div><div><div></div><div></div></div></div> <div><div><div></div><div></div></div><div><div></div><div></div></div></div> <div><div><div></div><div></div></div><div><div></div><div></div></div></div> <div><div><div></div><div></div></div><div><div></div><div></div></div></div> <div><div><div></div><div></div></div><div><div></div><div></div></div></div> <div><div><div></div><div></div></div><div><div></div><div></div></div></div> <div><div><div></div><div></div></div><div><div></div><div></div></div></div> <div><div><div></div><div></div></div><div><div></div><div></div></div></div> <div><div><div></div><div></div></div><div><div></div><div></div></div></div> <div><div><div></div><div></div></div><div><div></div><div></div></div></div> <div><div><div></div><div></div></div><div><div></div><div></div></div></div> <div><div><div></div><div></div></div><div><div></div><div></div></div></div> <div><div><div></div><div></div></div><div><div></div><div></div></div></div> <div><div><div></div><div></div></div><div><div></div><div></div></div></div> <div><div><div></div><div></div></div><div><div></div><div></div></div></div> <div><div><div></div><div></div></div><div><div></div><div></div></div></div> <div><div><div></div><div></div></div><div><div></div><div></div></div></div> <div><div><div></div><div></div></div><div><div></div><div></div></div></div> <div><div><div></div><div></div></div><div><div></div><div></div></div></div> <div><div><div></div><div></div></div><div><div></div><div></div></div></div> <div><div><div></div><div></div></div><div><div></div><div></div></div></div> <div><div><div></div><div></div></div><div><div></div><div></div></div></div> <div><div><div></div><div></div></div><div><div></div><div></div></div></div> <div><div><div></div><div></div></div><div><div></div><div></div></div></div> <div><div><div></div><div></div></div><div><div></div><div></div></div></div> <div><div><div></div><div></div></div><div><div></div><div></div></div></div> <div><div><div></div><div></div></div><div><div></div><div></div></div></div> <div><div><div></div><div></div></div><div><div></div><div></div></div></div> <div><div><div></div><div></div></div><div><div></div><div></div></div></div> <div><div><div></div><div></div></div><div><div></div><div></div></div></div> <div><div><div></div><div></div></div><div><div></div><div></div></div></div> <div><div><div></div><div></div></div><div><div></div><div></div></div></div> <div><div><div></div><div></div></div><div><div></div><div></div></div></div> <div><div><div></div><div></div></div><div><div></div><div></div></div></div> <div><div><div></div><div></div></div><div><div></div><div></div></div></div> <div><div><div></div><div></div></div><div><div></div><div></div></div></div> <div><div><div></div><div></div></div><div><div></div><div></div></div></div> <div><div><div></div><div></div></div><div><div></div><div></div></div></div> <div><div><div></div><div></div></div><div><div></div><div></div></div></div> <div><div><div></div><div></div></div><div><div></div><div></div></div></div> <div><div><div></div><div></div></div><div><div></div><div></div></div></div> <div><div><div></div><div></div></div><div><div></div><div></div></div></div> <div><div><div></div><div></div></div><div><div></div><div></div></div></div> <div><div><div></div><div></div></div><div><div></div><div></div></div></div> <div><div><div></div><div></div></div><div><div></div><div></div></div></div> <div><div><div></div><div></div></div><div><div></div><div></div></div></div> <div><div><div></div><div></div></div><div><div></div><div></div></div></div> <div><div><div></div><div></div></div><div><div></div><div></div></div></div> <div><div><div></div><div></div></div><div><div></div><div></div></div></div> <div><div><div></div><div></div></div><div><div></div><div></div></div></div> <div><div><div></div><div></div></div><div><div></div><div></div></div></div> <div><div><div></div><div></div></div><div><div></div><div></div></div></div> <div><div><div></div><div></div></div><div><div></div><div></div></div></div> <div><div><div></div><div></div></div><div><div></div><div></div></div></div> <div><div><div></div><div></div></div><div><div></div><div></div></div></div> <div><div><div></div><div></div></div><div><div></div><div></div></div></div> <div><div><div></div><div></div></div><div><div></div><div></div></div></div> <div><div><div></div><div></div></div><div><div></div><div></div></div></div> <div><div><div></div><div></div></div><div><div></div><div></div></div></div> <div><div><div></div><div></div></div><div><div></div><div></div></div></div> <div><div><div></div><div></div></div><div><div></div><div></div></div></div> <div><div><div></div><div></div></div><div><div></div><div></div></div></div> <div><div><div></div><div></div></div><div><div></div><div></div></div></div> <div><div><div></div><div></div></div><div><div></div><div></div></div></div> <div><div><div></div><div></div></div><div><div></div><div></div></div></div> <div><div><div></div><div></div></div><div><div></div><div></div></div></div> <div><div><div></div><div></div></div><div><div></div><div></div></div></div> <div><div><div></div><div></div></div><div><div></div><div></div></div></div> <div><div><div></div><div></div></div><div><div></div><div></div></div></div> <div><div><div></div><div></div></div><div><div></div><div></div></div></div> <div><div><div></div><div></div></div><div><div></div><div></div></div></div> <div><div><div></div><div></div></div><div><div></div><div></div></div></div> <div><div><div></div><div></div></div><div><div></div><div></div></div></div> <div><div><div></div><div></div></div><div><div></div><div></div></div></div> <div><div><div></div><div></div></div><div><div></div><div></div></div></div> <div><div><div></div><div></div></div><div><div></div><div></div></div></div> <div><div><div></div><div></div></div><div><div></div><div></div></div></div> <div><div><div></div><div></div></div><div><div></div><div></div></div></div> <div><div><div></div><div></div></div><div><div></div><div></div></div></div> <div><div><div></div><div></div></div><div><div></div><div></div></div></div> <div><div><div></div><div></div></div><div><div></div><div></div></div></div> <div><div><div></div><div></div></div><div><div></div><div></div></div></div> <div><div><div></div><div></div></div><div><div></div><div></div></div></div> <div><div><div></div><div></div></div><div><div></div><div></div></div></div> <div><div><div></div><div></div></div><div><div></div><div></div></div></div> <div><div><div></div><div></div></div><div><div></div><div></div></div></div> <div><div><div></div><div></div></div><div><div></div><div></div></div></div> <div><div><div></div><div></div></div><div><div></div><div></div></div></div> <div><div><div></div><div></div></div><div><div></div><div></div></div></div> <div><div><div></div><div></div></div><div><div></div><div></div></div></div> <div><div><div></div><div></div></div><div><div></div><div></div></div></div> <div><div><div></div><div></div></div><div><div></div><div></div></div></div> <div><div><div></div><div></div></div><div><div></div><div></div></div></div> <div><div><div></div><div></div></div><div><div></div><div></div></div></div> <div><div><div></div><div></div></div><div><div></div><div></div></div></div> <div><div><div></div><div></div></div><div><div></div><div></div></div></div> <div><div><div></div><div></div></div><div><div></div><div></div></div></div> <div><div><div></div><div></div></div><div><div></div><div></div></div></div> <div><div><div></div><div></div></div><div><div></div><div></div></div></div> <div><div><div></div><div></div></div><div><div></div><div></div></div></div> <div><div><div></div><div></div></div><div><div></div><div></div></div></div> <div><div><div></div><div></div></div><div><div></div><div></div></div></div> <div><div><div></div><div></div></div><div><div></div><div></div></div></div> <div><div><div></div><div></div></div><div><div></div><div></div></div></div> <div><div><div></div><div></div></div><div><div></div><div></div></div></div> <div><div><div></div><div></div></div><div><div></div><div></div></div></div> <div><div><div></div><div></div></div><div><div></div><div></div></div></div> <div><div><div></div><div></div></div><div><div></div><div></div></div></div> <div><div><div></div><div></div></div><div><div></div><div></div></div></div> <div><div><div></div><div></div></div><div><div></div><div></div></div></div> <div><div><div></div><div></div></div><div><div></div><div></div></div></div> <div><div><div></div><div></div></div><div><div></div><div></div></div></div> <div><div><div></div><div></div></div><div><div></div><div></div></div></div> <div><div><div></div><div></div></div><div><div></div><div></div></div></div> <div><div><div></div><div></div></div><div><div></div><div></div></div></div> <div><div><div></div><div></div></div><div><div></div><div></div></div></div> <div><div><div></div><div></div></div><div><div></div><div></div></div></div> <div><div><div></div><div></div></div><div><div></div><div></div></div></div> <div><div><div></div><div></div></div><div><div></div><div></div></div></div> <div><div><div></div><div></div></div><div><div></div><div></div></div></div> <div><div><div></div><div></div></div><div><div></div><div></div></div></div> <div><div><div></div><div></div></div><div><div></div><div></div></div></div> <div><div><div></div><div></div></div><div><div></div><div></div></div></div> <div><div><div></div><div></div></div><div><div></div><div></div></div></div> <div><div><div></div><div></div></div><div><div></div><div></div></div></div> <div><div><div></div><div></div></div><div><div></div><div></div></div></div> <div><div><div></div><div></div></div><div><div></div><div></div></div></div> <div><div><div></div><div></div></div><div><div></div><div></div></div></div> <div><div><div></div><div></div></div><div><div></div><div></div></div></div> <div><div><div></div><div></div></div><div><div></div><div></div></div></div> <div><div><div></div><div></div></div><div><div></div><div></div></div></div> <div><div><div></div><div></div></div><div><div></div><div></div></div></div> <div><div><div></div><div></div></div><div><div></div><div></div></div></div> <div><div><div></div><div></div></div><div><div></div><div></div></div></div> <div><div><div></div><div></div></div><div><div></div><div></div></div></div> <div><div><div></div><div></div></div><div><div></div><div></div></div></div> <div><div><div></div><div></div></div><div><div></div><div></div></div></div> <div><div><div></div><div></div></div><div><div></div><div></div></div></div> <div><div><div></div><div></div></div><div><div></div><div></div></div></div> <div><div><div></div><div></div></div><div><div></div><div></div></div></div> <div><div><div></div><div></div></div><div><div></div><div></div></div></div> <div><div><div></div><div></div></div><div><div></div><div></div></div></div> <div><div><div></div><div></div></div><div><div></div><div></div></div></div> <div><div><div></div><div></div></div><div><div></div><div></div></div></div> <div><div><div></div><div></div></div><div><div></div><div></div></div></div> <div><div><div></div><div></div></div><div><div></div><div></div></div></div> <div><div><div></div><div></div></div><div><div></div><div></div></div></div> <div><div><div></div><div></div></div><div><div></div><div></div></div></div> <div><div><div></div><div></div></div><div><div></div><div></div></div></div> <div><div><div></div><div></div></div><div><div></div><div></div></div></div> <div><div><div></div><div></div></div><div><div></div><div></div></div></div> <div><div><div></div><div></div></div><div><div></div><div></div></div></div> <div><div><div></div><div></div></div><div><div></div><div></div></div></div> <div><div><div></div><div></div></div><div><div></div><div></div></div></div> <div><div><div></div><div></div></div><div><div></div><div></div></div></div> <div><div><div></div><div></div></div><div><div></div><div></div></div></div> <div><div><div></div><div></div></div><div><div></div><div></div></div></div> <div><div><div></div><div></div></div><div><div></div><div></div></div></div> <				
---	--	--	--	--



Photograph B1.36: Existing view from an unnamed track running southwest from Southwick Road looking southwest to northeast across farmland towards the route of the proposed 400kV overhead line and the F Route above field boundary hedgerow and trees



Photograph B1.37: Existing view from the northwestern end of PRow AX23/9 looking west and north towards the route of the proposed 400kV overhead line screened by intervening field boundary hedgerow and trees



Photograph B1.38: Existing view from Tile House Road looking west and northwest towards the route of the proposed 400kV overhead line across flat farmland

A	22/03/2014	DCO SUBMISSION	JS	NH	NH
ISSUE	DATE	COMMENTS	DRAW	CHK'D	APP'D
<u>Title</u> NATIONAL GRID (HINKLEY POINT C CONNECTION PROJECT) ENVIRONMENTAL STATEMENT VOLUME 5.7.3					
SECTION B: PHOTOGRAPHS OF EXISTING VIEWS WITHIN 1KM					
<div><div>nationalgrid</div><div>National Grid plc, Warwick Technology Park, Gallows Hill, Warwick, CV34 6DA</div></div>					
NG INVESTMENT No.	APPLICATION No.		IN A3		
20897	EN020001				
FIGURE No.	DRAWING No.	SCALE		NTS	
7.7.14	IN1979.24.002				
SHEET 14 OF 44			ISSUE A		



Photograph B1.39a: Existing view from Southwick Road looking southwest to north across flat farmland towards the route of the proposed 400kV overhead line and the F Route beyond above intervening hedgerow and trees



Photograph B1.39b: Existing view from PRow AX 23/5 on Green Drove looking southwest to north across flat farmland towards the route of the proposed 400kV overhead line and the F Route beyond above intervening hedgerow and trees



Photograph B1.40: Existing view from Yardwall Road south of Mark Causeway looking east across fields towards the route of the proposed 400kV overhead line with Mark Church perceptible in the distance

A	22/03/2014	DCO SUBMISSION	JS	NH	NH
ISSUE	DATE	COMMENTS	DRAW	CHK'D	APP'D
<div>Title</div> <div>NATIONAL GRID (HINKLEY POINT C CONNECTION PROJECT) ENVIRONMENTAL STATEMENT VOLUME 5.7.3</div> <div>SECTION B: PHOTOGRAPHS OF EXISTING VIEWS WITHIN 1KM</div>					
<div><div>nationalgrid</div><div>National Grid plc, Warwick Technology Park, Gallow's Hill, Warwick, CV34 6DA</div></div>					
NG INVESTMENT No.	APPLICATION No.		IN		
20897	EN020001		A3		
FIGURE No.	DRAWING No.	SCALE		NTS	
7.7.15	IN1979.24.002				
SHEET 15 OF 44				ISSUE	
				A	



Photograph B1.41: Existing view from Butt Lake Road south of Mark Causeway looking southwest towards the route of the proposed 400kV overhead line across flat farmland and towards the F Route beyond



Photograph B1.42: Existing view from PRow AX 23/5 on Green Drove south of Mark Causeway looking northwest towards the route of the proposed 400kV overhead line across flat farmland and towards the F Route beyond



Photograph B1.43: Existing view from PRow AX 23/6 looking west and southwest across farmland towards the route of the proposed 400kV overhead line running across Butt Lake Road

A	22/03/2014	DCO SUBMISSION	JS	NH	NH
ISSUE	DATE	COMMENTS	DRAW	CHKD	APP'D

<u>Title</u> NATIONAL GRID (HINKLEY POINT C CONNECTION PROJECT) ENVIRONMENTAL STATEMENT VOLUME 5.7.3 SECTION B: PHOTOGRAPHS OF EXISTING VIEWS WITHIN 1KM					
--	--	--	--	--	--



Photograph B1.44: Existing view from PRow AX 23/5 looking westwards along this footpath towards the route of the proposed 400kV overhead line running across and north of Butt Lake Road



Photograph B1.45: Existing view from PRow AX 23/5 looking west across farmland towards the route of the proposed 400kV overhead line in the distance



Photograph B1.46: Existing view from Mark Causeway looking east and south towards the route of the proposed 400kV overhead line passing over Mark Causeway and fields to the south of this road

A	22/03/2014	DCO SUBMISSION	JS	NH	NH
ISSUE	DATE	COMMENTS	DRAW	CHKD	APP'D

Title NATIONAL GRID (HINKLEY POINT C CONNECTION PROJECT) ENVIRONMENTAL STATEMENT VOLUME 5.7.3					
SECTION B: PHOTOGRAPHS OF EXISTING VIEWS WITHIN 1KM					

<div><div>nationalgrid</div><div>National Grid plc, Warwick Technology Park, Gallow's Hill, Warwick, CV34 6DA</div></div>			
NG INVESTMENT No.	APPLICATION No.		IN
20897	EN020001		A3
FIGURE No.	DRAWING No.	SCALE	
7.7.17	IN1979.24.002	NTS	
SHEET 17 OF 44			ISSUE
			A



Photograph B1.47: Existing view from Mark Causeway looking north and east towards the route of the proposed 400kV overhead line passing over fields north of Mark Causeway



Photograph B1.48 (Part 1): Existing view from Mark Causeway near Court Farm looking south to north towards the route of the proposed 400kV overhead line passing over Mark Causeway and adjacent fields



Photograph B1.48 (Part 2): Existing view from Mark Causeway near Court Farm looking south to north towards the route of the proposed 400kV overhead line passing over Mark Causeway and adjacent fields

A	22/03/2014	DCO SUBMISSION	JS	NH	NH
ISSUE	DATE	COMMENTS	DRAW	CHK'D	APP'D
<div>Title</div> <div>NATIONAL GRID (HINKLEY POINT C CONNECTION PROJECT) ENVIRONMENTAL STATEMENT VOLUME 5.7.3</div> <div>SECTION B: PHOTOGRAPHS OF EXISTING VIEWS WITHIN 1KM</div>					
<div><div>nationalgrid</div><div>National Grid plc, Warwick Technology Park, Gallowes Hill, Warwick, CV34 6DA</div></div>					
NG INVESTMENT No.	APPLICATION No.		IN		
20897	EN020001		A3		
FIGURE No.	DRAWING No.	SCALE		NTS	
7.7.18	IN1979.24.002				
SHEET 18 OF 44			ISSUE		
			A		



Photograph B1.49: Existing view from PRow AX 23/4 looking west and northwest towards the route of the proposed 400kV overhead line and the F Route beyond intervening farmland and hedgerow



Photograph B1.50: Existing view from PRow AX23/10 looking west to northeast across farmland towards the route of the proposed 400kV overhead line and the F Route beyond and above intervening hedgerow and trees



Photograph B1.51: Existing view from Mark Causeway looking west and north towards the F Route passing over Coombes Cider Farm Caravan Park

A	22/03/2014	DCO SUBMISSION	JS	NH	NH
ISSUE	DATE	COMMENTS	DRAW	CHKD	APP'D

Title

NATIONAL GRID (HINKLEY POINT C CONNECTION PROJECT)

ENVIRONMENTAL STATEMENT

VOLUME 5.7.3

SECTION B: PHOTOGRAPHS OF EXISTING VIEWS WITHIN 1KM

nationalgrid		National Grid plc, Warwick Technology Park, Gallows Hill, Warwick, CV34 6DA	
NG INVESTMENT No.	APPLICATION No.		IN
20897	EN020001		A3
FIGURE No.	DRAWING No.	SCALE	ISSUE
7.7.19	IN1979.24.002	NTS	A
SHEET 19 OF 44			



Photograph B1.52: Existing view from PRow AX 23/11 looking northeast to southwest towards the F Route passing over Coombes Caravan Park



Photograph B1.53: Existing view from Harp Road looking northeast towards the F Route north of Back Lane and towards the route of the proposed 400kV overhead line further east



Photograph B1.54: Existing view from near The Old Barn on the B3139 Mark Causeway through Mark looking south across fields along the F Route



Photograph B1.55: Existing view from the B3139 Mark Causeway looking east towards the F Route passing over and immediately north of Mark Causeway

A	22/03/2014	DCO SUBMISSION	JS	NH	NH
ISSUE	DATE	COMMENTS	DRAW	CHKD	APP'D
Title					
NATIONAL GRID (HINKLEY POINT C CONNECTION PROJECT)					
ENVIRONMENTAL STATEMENT					
VOLUME 5.7.3					
SECTION B: PHOTOGRAPHS OF EXISTING VIEWS WITHIN 1KM					
nationalgrid					
National Grid plc, Warwick Technology Park, Galloway Hill, Warwick, CV34 6DA					
NG INVESTMENT No.	APPLICATION No.		IN		
20897	EN020001		A3		
FIGURE No.	DRAWING No.		SCALE		
7.7.20	IN1979.24.002		NTS		
SHEET 20 OF 44					ISSUE
					A



Photograph B1.56: Existing view from the B3139 Mark Causeway looking south between properties on the south side of Mark Causeway towards the F Route beyond farmland and above intervening hedgerow and trees



Photograph B1.57: Existing view from adjacent a property on Harp Road looking northeast and east towards the F Route beyond farmland and towards the route of the proposed 400kV overhead line beyond



Photograph B1.58: Existing view from Harp Road near Greystones Farm looking east and south towards the F Route beyond farmland and towards the route of the proposed 400kV overhead line beyond

A	22/03/2014	DCO SUBMISSION	JS	NH	NH
ISSUE	DATE	COMMENTS	DRAW	CHKD	APP'D

<u>Title</u> NATIONAL GRID (HINKLEY POINT C CONNECTION PROJECT) ENVIRONMENTAL STATEMENT VOLUME 5.7.3 SECTION B: PHOTOGRAPHS OF EXISTING VIEWS WITHIN 1KM					
--	--	--	--	--	--

nationalgrid			
National Grid plc, Warwick Technology Park, Gallows Hill, Warwick, CV34 6DA			
NG INVESTMENT No.	APPLICATION No.		IN
20897	EN020001		A3
FIGURE No.	DRAWING No.	SCALE	
7.7.21	IN1979.24.002	NTS	
SHEET 21 OF 44			ISSUE
			A



Photograph B1.59a: Existing view from Northwick Road near a property looking southwest towards the F Route beyond farmland and towards the route of the proposed 400kV overhead line beyond



Photograph B1.59b: Existing view from Northwick Road looking northeast towards the F Route beyond a hedgerow and trees and towards the route of the proposed 400kV overhead line beyond

A	22/03/2014	DCO SUBMISSION	JS	NH	NH
ISSUE	DATE	COMMENTS	DRAW	CHKD	APP'D

<u>Title</u> NATIONAL GRID (HINKLEY POINT C CONNECTION PROJECT) ENVIRONMENTAL STATEMENT VOLUME 5.7.3 SECTION B: PHOTOGRAPHS OF EXISTING VIEWS WITHIN 1KM					
--	--	--	--	--	--

<div><div>nationalgrid</div><div>National Grid plc, Warwick Technology Park, Galloway Hill, Warwick, CV34 6DA</div></div>			
NG INVESTMENT No.	APPLICATION No.		IN
20897	EN020001		A3
FIGURE No.	DRAWING No.	SCALE	
7.7.22	IN1979.24.002	NTS	
SHEET 22 OF 44			ISSUE
			A



Photograph B1.60: Existing view from the eastern end of Northwick Road looking northwest to northeast across farmland towards the F Route and the route of the proposed 400kV overhead line



Photograph B1.61: Existing view from the road adjacent a property named Wellfield Farm looking southwest to north across farmland towards the F Route and the route of the proposed 400kV overhead line



Photograph B1.62: Existing view from Vole Road adjacent a property named Wellfield House looking northwest to northeast across farmland towards the F Route and the route of the proposed 400kV overhead line

A	22/03/2014	DCO SUBMISSION	JS	NH	NH
ISSUE	DATE	COMMENTS	DRAW	CHK'D	APP'D
<div>Title</div> <div>NATIONAL GRID (HINKLEY POINT C CONNECTION PROJECT) ENVIRONMENTAL STATEMENT VOLUME 5.7.3</div> <div>SECTION B: PHOTOGRAPHS OF EXISTING VIEWS WITHIN 1KM</div>					
<div><div>nationalgrid</div><div>National Grid plc, Warwick Technology Park, Gallows Hill, Warwick, CV34 6DA</div></div>					
NG INVESTMENT No.	APPLICATION No.		IN		
20897	EN020001		A3		
FIGURE No.	DRAWING No.	SCALE		NTS	
7.7.23	IN1979.24.002				
SHEET 23 OF 44				ISSUE	
				A	



Photograph B1.63: Existing view from Mark Moor Sports Pitches on Vole Road looking northwest to northeast across a sports pitch towards the route of the proposed 400kV overhead line and towards the F Route



Photograph B1.64: Existing view from Vole Road looking northwest to northeast towards the F Route and the route of the proposed 400kV overhead line



Photograph B1.65: Existing view from PRow AX 23/14 between Vole and Pillrow Wall looking north along the F Route and towards the route of the proposed 400kV overhead line across fields, with the Mendip Hills beyond

A	22/03/2014	DCO SUBMISSION	JS	NH	NH
ISSUE	DATE	COMMENTS	DRAW	CHK'D	APP'D
<div>Title</div> <div>NATIONAL GRID (HINKLEY POINT C CONNECTION PROJECT) ENVIRONMENTAL STATEMENT VOLUME 5.7.3</div> <div>SECTION B: PHOTOGRAPHS OF EXISTING VIEWS WITHIN 1KM</div>					
<div><div><div>nationalgrid</div><div>National Grid plc, Warwick Technology Park, Gallows Hill, Warwick, CV34 6DA</div></div></div>					
NG INVESTMENT No.	APPLICATION No.		IN		
20897	EN020001		A3		
FIGURE No.	DRAWING No.	SCALE		NTS	
7.7.24	IN1979.24.002				
SHEET 24 OF 44				ISSUE	
				A	



Photograph B1.66: Existing view from PRow AX 23/14 between Vole and Pillrow Wall looking south along the F Route towards Vole Farm on Vole Road and towards the route of the proposed 400kV overhead line beyond



Photograph B1.67: Existing view from Vole Road near Vole Farm looking east to southwest towards the F Route and the route of the proposed 400kV overhead line above and beyond properties at Vole



Photograph B1.68: Existing view from Pill Road to the east of Old Vole Farm looking northeast to south across farmland towards the F Route and the route of the proposed 400kV overhead line

A	22/03/2014	DCO SUBMISSION	JS	NH	NH
ISSUE	DATE	COMMENTS	DRAW	CHKD	APP'D

<u>Title</u> NATIONAL GRID (HINKLEY POINT C CONNECTION PROJECT) ENVIRONMENTAL STATEMENT VOLUME 5.7.3					
SECTION B: PHOTOGRAPHS OF EXISTING VIEWS WITHIN 1KM					

</



Photograph B1.69: Existing view from Vole Road near the entrance to Chestnut Farm and Knoll View Farm looking north to southeast across fields adjacent Vole and Pill Road towards the F Route and the route of the proposed 400kV overhead line



Photograph B1.70 (Part 1): Existing view from PRow AX 23/15 running along Pillrow Wall (Track) looking southwest to northeast across fields towards the route of the proposed 400kV overhead line and the F Route beyond



Photograph B1.70 (Part 2): Existing view from PRow AX 23/15 running along Pillrow Wall (Track) looking southwest to northeast across fields towards the route of the proposed 400kV overhead line and the F Route beyond

A	22/03/2014	DCO SUBMISSION	JS	NH	NH
ISSUE	DATE	COMMENTS	DRAW	CHKD	APP'D

<u>Title</u> NATIONAL GRID (HINKLEY POINT C CONNECTION PROJECT) ENVIRONMENTAL STATEMENT VOLUME 5.7.3 SECTION B: PHOTOGRAPHS OF EXISTING VIEWS WITHIN 1KM					
--	--	--	--	--	--

<div><div><div>nationalgrid</div><div>National Grid plc, Warwick Technology Park, Gallows Hill, Warwick, CV34 6DA</div></div></div>			
NG INVESTMENT No.	APPLICATION No.		IN
20897	EN020001		A3
FIGURE No.	DRAWING No.	SCALE	
7.7.26	IN1979.24.002	NTS	
SHEET 26 OF 44			ISSUE
			A



Photograph B1.71: Existing view from PRow AX 23/14 east of Vole looking northwest towards the F Route and the route of the proposed 400kV overhead line, with Brent Knoll and the Mendip Hills beyond



Photograph B1.72 (Part 1) : Existing view from Kingsway near Lower Plaish Farm looking southwest to northwest across fields towards the route of the proposed 400kV overhead line and the F Route beyond



Photograph A1.72 (Part 2): Existing view from Kingsway near Lower Plaish Farm looking southwest to northwest across fields towards the route of the proposed 400kV overhead line and the F Route beyond

A	22/03/2014	DCO SUBMISSION	JS	NH	NH
ISSUE	DATE	COMMENTS	DRAW	CHK'D	APP'D
<div>Title</div> <div>NATIONAL GRID (HINKLEY POINT C CONNECTION PROJECT) ENVIRONMENTAL STATEMENT VOLUME 5.7.3</div> <div>SECTION B: PHOTOGRAPHS OF EXISTING VIEWS WITHIN 1KM</div>					
<div><div>nationalgrid</div><div>National Grid plc, Warwick Technology Park, Gallows Hill, Warwick, CV34 6DA</div></div>					
NG INVESTMENT No.		APPLICATION No.		IN A3	
20897		EN020001			
FIGURE No.		DRAWING No.		SCALE	
7.7.27		IN1979.24.002		NTS	
SHEET 27 OF 44				ISSUE A	



Photograph B1.73: Existing view from Kingsway near the route of PRow AX 2/14 and south of New Homestead Farm looking southwest to northwest across fields towards the route of the proposed 400kV overhead line and towards the F Route beyond



Photograph B1.74: Existing view from PRow AX 17/30 on Pillrow Wall looking southwest and west across fields towards the route of the proposed 400kV overhead line and the F Route beyond



Photograph B1.75: Existing view from Pill Road at the northern end of PRow AX 17/30, looking southwest to northeast across fields towards the route of the proposed 400kV overhead line and the F Route

A	22/03/2014	DCO SUBMISSION	JS	NH	NH
ISSUE	DATE	COMMENTS	DRAW	CHKD	APP'D

<u>Title</u> NATIONAL GRID (HINKLEY POINT C CONNECTION PROJECT) ENVIRONMENTAL STATEMENT VOLUME 5.7.3 SECTION B: PHOTOGRAPHS OF EXISTING VIEWS WITHIN 1KM					
--	--	--	--	--	--

<



Photograph B1.76: Existing view from Kingsway looking northwest across fields towards the route of the proposed 400kV overhead line and the F Route with Brent Knoll and the Mendip Hills beyond



Photograph B1.77 (Part 1): Existing view from PRow AX 17/12 looking southwest to northwest across fields towards the route of the proposed 400kV overhead line and the F Route



Photograph B1.77 (Part 2): Existing view from PRow AX 17/12 south of Gills Lane looking south across fields towards the F Route and the route of the proposed 400kV overhead line above and between field hedgerow and trees

A	22/03/2014	DCO SUBMISSION	JS	NH	NH
ISSUE	DATE	COMMENTS	DRAW	CHK'D	APP'D
<div>Title</div> <div>NATIONAL GRID (HINKLEY POINT C CONNECTION PROJECT) ENVIRONMENTAL STATEMENT VOLUME 5.7.3</div> <div>SECTION B: PHOTOGRAPHS OF EXISTING VIEWS WITHIN 1KM</div>					
<div><div>nationalgrid</div><div>National Grid plc, Warwick Technology Park, Gallows Hill, Warwick, CV34 6DA</div></div>					
NG INVESTMENT No.		APPLICATION No.		IN	
20897		EN020001		A3	
FIGURE No.		DRAWING No.		SCALE	
7.7.29		IN1979.24.002		NTS	
SHEET 29 OF 44				ISSUE	
				A	



Photograph B1.78: Existing view from PRow AX 17/12 south and southwest of Gills Lane looking south and south west across fields towards the F Route and the route of the proposed 400kV overhead line above and between field hedgerow and trees



Photograph B1.79: Existing view from PRow AX 17/12 south of Gills Lane looking east across fields towards the F Route and the route of the proposed 400kV overhead line between intervening field boundary hedgerow and trees



Photograph B1.80: Existing view from Gills Lane near the entrance to The Elms Farm looking eastwards across farmland towards the F Route and the route of the proposed 400kV overhead line above intervening field boundary hedgerow and trees

A	22/03/2014	DCO SUBMISSION	JS	NH	NH
ISSUE	DATE	COMMENTS	DRAW	CHKD	APP'D

<u>Title</u> NATIONAL GRID (HINKLEY POINT C CONNECTION PROJECT) ENVIRONMENTAL STATEMENT VOLUME 5.7.3 SECTION B: PHOTOGRAPHS OF EXISTING VIEWS WITHIN 1KM					
--	--	--	--	--	--

<div><div>nationalgrid</div><div>National Grid plc, Warwick Technology Park, Galloway Hill, Warwick, CV34 6DA</div></div>			
NG INVESTMENT No.	APPLICATION No.		IN
20897	EN020001		A3
FIGURE No.	DRAWING No.	SCALE	
7.7.30	IN1979.24.002	NTS	
SHEET 30 OF 44			ISSUE
			A



Photograph B1.81: Existing view from Old Mead Lane near an agricultural building looking southeastwards along the track towards the F Route and the route of the proposed 400kV overhead line above field boundary hedgerow and trees



Photograph B1.82: Existing view from Mudgeley Road near The Stables Business Park looking east to southwest across fields towards the F Route and the route of the proposed 400kV overhead line above intervening hedgerow and trees



Photograph B1.83: Existing view from the A38 Bristol Road (near residential properties north of the A38) looking southeast towards the F Route and the route of the proposed 400kV overhead line in the distance beyond fields and new housing on Pill Road

A	22/03/2014	DCO SUBMISSION	JS	NH	NH
ISSUE	DATE	COMMENTS	DRAW	CHKD	APP'D

Title

NATIONAL GRID (HINKLEY POINT C CONNECTION PROJECT)

ENVIRONMENTAL STATEMENT

VOLUME 5.7.3

SECTION B: PHOTOGRAPHS OF EXISTING VIEWS WITHIN 1KM



Photograph B1.84: Existing view from the Mendip Road (near farm buildings on the west side of Mendip Road) looking north to southeast towards the F Route and the route of the proposed 400kV overhead line in the distance beyond fields and intervening hedgerow and trees



Photograph B1.85: Existing view from Chapel Road in Rooks Bridge near Willow Farm looking north towards the route of the proposed 400kV overhead line and the F Route backgrounded by the Mendip Hills



Photograph B1.86: Existing view from the junction between Chapel Road and the A38 Bristol Road looking northeast to southwest across the A38 towards the F Route and the route of the proposed 400kV overhead line

A	22/03/2014	DCO SUBMISSION	JS	NH	NH
ISSUE	DATE	COMMENTS	DRAW	CHKD	APP'D

Title NATIONAL GRID (HINKLEY POINT C CONNECTION PROJECT) ENVIRONMENTAL STATEMENT VOLUME 5.7.3					
SECTION B: PHOTOGRAPHS OF EXISTING VIEWS WITHIN 1KM					

<div><div><div>nationalgrid</div><div>National Grid plc, Warwick Technology Park, Gallow's Hill, Warwick, CV34 6DA</div></div></div>			
NG INVESTMENT No.	APPLICATION No.		IN
20897	EN020001		A3
FIGURE No.	DRAWING No.	SCALE	
7.7.32	IN1979.24.002	NTS	
SHEET 32 OF 44			ISSUE
			A



Photograph B1.87: Existing view from the A38 Bristol Road looking north and east towards the F Route and the route of the proposed 400kV overhead line north of Tarnock



Photograph B1.88: Existing view from the A38 Bristol Road looking west and south towards the F Route and the route of the proposed 400kV overhead line



Photograph B1.89: Existing view from Fletcher’s Lane looking west and north towards the F Route and the route of the proposed 400kV overhead line across farmland

A	22/03/2014	DCO SUBMISSION	JS	NH	NH
ISSUE	DATE	COMMENTS	DRAW	CHKD	APP'D

Title

NATIONAL GRID (HINKLEY POINT C CONNECTION PROJECT)

ENVIRONMENTAL STATEMENT

VOLUME 5.7.3

SECTION B: PHOTOGRAPHS OF EXISTING VIEWS WITHIN 1KM

nationalgrid			National Grid plc, Warwick Technology Park, Galloway Hill, Warwick, CV34 6DA		
NG INVESTMENT No.	APPLICATION No.		IN		
20897	EN020001		A3		
FIGURE No.	DRAWING No.		SCALE		
7.7.33	IN1979.24.002		NTS		
SHEET 33 OF 44			ISSUE		
			A		



Photograph B1.90: Existing view from the A38 Bristol Road looking north across a property garden towards the F Route and the route of the proposed 400kV overhead line



Photograph B1.91: Existing view from the A38 Bristol Road looking south to north towards residential property and farm buildings at Manor Farm, and towards the F Route and the route of the proposed 400kV overhead line across the A38 Bristol Road and across farmland



Photograph B1.92: Existing view from the A38 Bristol Road near a residential property at Biddisham Bridge looking southwest to northeast towards the F Route and the route of the proposed 400kV overhead line in the distance beyond farmland and between intervening roadside and field boundary hedgerow and trees

A	22/03/2014	DCO SUBMISSION	JS	NH	NH
ISSUE	DATE	COMMENTS	DRAW	CHKD	APP'D

Title					
NATIONAL GRID (HINKLEY POINT C CONNECTION PROJECT)					
ENVIRONMENTAL STATEMENT					
VOLUME 5.7.3					
SECTION B: PHOTOGRAPHS OF EXISTING VIEWS WITHIN 1KM					

nationalgrid					
National Grid plc, Warwick Technology Park, Gallows Hill, Warwick, CV34 6DA					
NG INVESTMENT No.	APPLICATION No.		IN		
20897	EN020001		A3		
FIGURE No.	DRAWING No.		SCALE		
7.7.34	IN1979.24.002		NTS		
SHEET 34 OF 44				ISSUE	
				A	



Photograph B1.93: Existing view from PRow AX 2/10 looking east towards the F Route and the route of the proposed 400kV overhead line screened by intervening field boundary hedgerow and trees



Photograph B1.94: Existing view from the southern part of Biddisham Lane near adjacent properties, looking east and southeast towards the F Route and the route of the proposed 400kV overhead line beyond farmland and above and between intervening field boundary hedgerow and trees



Photograph B1.95: Existing view from an access road west of Biddisham Lane near adjacent properties looking west to northeast across farmland towards the F Route and the route of the proposed 400kV overhead line above and between intervening field boundary hedgerow and trees

A	22/03/2014	DCO SUBMISSION	JS	NH	NH
ISSUE	DATE	COMMENTS	DRAW	CHKD	APP'D

<u>Title</u> NATIONAL GRID (HINKLEY POINT C CONNECTION PROJECT) ENVIRONMENTAL STATEMENT VOLUME 5.7.3					
SECTION B: PHOTOGRAPHS OF EXISTING VIEWS WITHIN 1KM					

<



Photograph B1.96 (Part 1): Existing view from PRow AX 2/9 looking southwest to north towards the F Route and the route of the proposed 400kV overhead line beyond farmland and above intervening field boundary hedgerow and trees



Photograph B1.96 (Part 2): Existing view from PRow AX 2/9 looking southwest to north towards the F Route and the route of the proposed 400kV overhead line beyond farmland and above intervening field boundary hedgerow and trees



Photograph B1.97: Existing view from Biddisham Lane adjacent to PRow AX 2/9 looking northwest towards Manor Farm and The Old School adjacent to Biddisham Lane, and across fields towards the F Route and the route of the proposed 400kV overhead line above trees, and towards the site of the proposed CSE compound with the Mendip Hills beyond

A	22/03/2014	DCO SUBMISSION	JS	NH	NH
ISSUE	DATE	COMMENTS	DRAW	CHKD	APP'D

Title

NATIONAL GRID (HINKLEY POINT C CONNECTION PROJECT)
ENVIRONMENTAL STATEMENT
VOLUME 5.7.3

SECTION B: PHOTOGRAPHS OF EXISTING VIEWS WITHIN 1KM

nationalgrid			National Grid plc, Warwick Technology Park, Galloway Hill, Warwick, CV34 6DA		
NG INVESTMENT No.	APPLICATION No.		IN		
20897	EN020001		A3		
FIGURE No.	DRAWING No.		SCALE		
7.7.36	IN1979.24.002		NTS		
SHEET 36 OF 44			ISSUE		
			A		



Photograph B1.98: Existing view from Biddisham Lane to north of the entrance to the St John the Baptist Church looking northwest across farmland, with partial filtering and screening by roadside trees, towards the F Route and the route of the proposed 400kV overhead line in the distance above intervening field boundary hedgerow and trees



Photograph B1.99 (Part 1): Existing view from Biddisham Lane near properties south of Coombe’s Way looking southeast to northwest across farmland towards the F Route and the route of the proposed 400kV overhead line above and between intervening field boundary hedgerow and trees



Photograph B1.99 (Part 2): Existing view from Biddisham Lane near properties south of Coombe’s Way looking southeast to northwest across farmland towards the F Route and the route of the proposed 400kV overhead line above and between intervening field boundary hedgerow and trees

A	22/03/2014	DCO SUBMISSION	JS	NH	NH
ISSUE	DATE	COMMENTS	DRAW	CHKD	APP'D

<u>Title</u> NATIONAL GRID (HINKLEY POINT C CONNECTION PROJECT) ENVIRONMENTAL STATEMENT VOLUME 5.7.3 SECTION B: PHOTOGRAPHS OF EXISTING VIEWS WITHIN 1KM					
--	--	--	--	--	--

<div><div>nationalgrid</div><div>National Grid plc, Warwick Technology Park, Gallow's Hill, Warwick, CV34 6DA</div></div>			
NG INVESTMENT No.	APPLICATION No.		IN
20897	EN020001		A3
FIGURE No.	DRAWING No.	SCALE	
7.7.37	IN1979.24.002	NTS	
SHEET 37 OF 44			ISSUE
			A



Photograph B1.100 (Part 1): Existing view from Rooksbridge Road near Nut Tree Farm looking northeast to south towards the F Route and the route of the proposed 400kV overhead line between intervening trees and hedgerow



Photograph B1.100 (Part 2): Existing view from Rooksbridge Road near Nut Tree Farm looking northeast to south towards the F Route and the route of the proposed 400kV overhead line between intervening trees and hedgerow



Photograph B1.101: Existing view from Rooksbridge Road near the entrance to York Farm looking north east to southeast towards the F Route and the route of the proposed 400kV overhead line beyond farmland and above and between intervening field boundary hedgerow and trees

A	22/03/2014	DCO SUBMISSION	JS	NH	NH
ISSUE	DATE	COMMENTS	DRAW	CHKD	APP'D

<u>Title</u> NATIONAL GRID (HINKLEY POINT C CONNECTION PROJECT) ENVIRONMENTAL STATEMENT VOLUME 5.7.3					
SECTION B: PHOTOGRAPHS OF EXISTING VIEWS WITHIN 1KM					

<div><div>nationalgrid</div><div>National Grid plc, Warwick Technology Park, Gallow's Hill, Warwick, CV34 6DA</div></div>			
NG INVESTMENT No.	APPLICATION No.		IN
20897	EN020001		A3
FIGURE No.	DRAWING No.	SCALE	
7.7.38	IN1979.24.002	NTS	
SHEET 38 OF 44			ISSUE
			A



Photograph B1.102: Existing view from Mendip Road on the bridge over the M5 motorway looking northeast along the motorway towards the site of the proposed CSE compound and the route of the proposed 400kV overhead line across fields and towards the F Route beyond, backgrounded by the Mendip Hills



Photograph B1.103: Existing view from Biddisham Lane north of Biddisham looking southwest across flat farmland towards the F Route and the route of the proposed 400kV overhead line and the site of the proposed CSE compound beyond



Photograph B1.104: Existing view from Biddisham Lane adjacent Waterfront Farm looking west towards the F Route and the route of the proposed 400kV underground cables partly filtered and screened by trees along the southwestern property boundary

A	22/03/2014	DCO SUBMISSION	JS	NH	NH
ISSUE	DATE	COMMENTS	DRAW	CHKD	APP'D

<p><u>Title</u> NATIONAL GRID (HINKLEY POINT C CONNECTION PROJECT) ENVIRONMENTAL STATEMENT VOLUME 5.7.3</p> <p>SECTION B: PHOTOGRAPHS OF EXISTING VIEWS WITHIN 1KM</p>					
--	--	--	--	--	--

<div><div></div><div><div><div></div><div></div></div><div><div></div><div></div></div></div><div><div></div><div></div></div><div><div></div><div></div></div></div> <div><div></div><div></div></div> <div><div></div><div></div></div> <div><div></div><div></div></div> <div><div></div><div></div></div> <div><div></div><div></div></div> <div><div></div><div></div></div> <div><div></div><div></div></div> <div><div></div><div></div></div> <div><div></div><div></div></div> <div><div></div><div></div></div> <div><div></div><div></div></div> <div><div></div><div></div></div> <div><div></div><div></div></div> <div><div></div><div></div></div> <div><div></div><div></div></div> <div><div></div><div></div></div> <div><div></div><div></div></div> <div><div></div><div></div></div> <div><div></div><div></div></div> <div><div></div><div></div></div> <div><div></div><div></div></div> <div><div></div><div></div></div> <div><div></div><div></div></div> <div><div></div><div></div></div> <div><div></div><div></div></div> <div><div></div><div></div></div> <div><div></div><div></div></div> <div><div></div><div></div></div> <div><div></div><div></div></div> <div><div></div><div></div></div> <div><div></div><div></div></div> <div><div></div><div></div></div> <div><div></div><div></div></div> <div><div></div><div></div></div> <div><div></div><div></div></div> <div><div></div><div></div></div> <div><div></div><div></div></div> <div><div></div><div></div></div> <div><div></div><div></div></div> <div><div></div><div></div></div> <div><div></div><div></div></div> <div><div></div><div></div></div> <div><div></div><div></div></div> <div><div></div><div></div></div> <div><div></div><div></div></div> <div><div></div><div></div></div> <div><div></div><div></div></div> <div><div></div><div></div></div> <div><div></div><div></div></div> <div><div></div><div></div></div> <div><div></div><div></div></div> <div><div></div><div></div></div> <div><div></div><div></div></div> <div><div></div><div></div></div> <div><div></div><div></div></div> <div><div></div><div></div></div> <div><div></div><div></div></div> <div><div></div><div></div></div> <div><div></div><div></div></div> <div><div></div><div></div></div> <div><div></div><div></div></div> <div><div></div><div></div></div> <div><div></div><div></div></div> <div><div></div><div></div></div> <div><div></div><div></div></div> <div><div></div><div></div></div> <div><div></div><div></div></div> <div><div></div><div></div></div> <div><div></div><div></div></div> <div><div></div><div></div></div> <div><div></div><div></div></div> <div><div></div><div></div></div> <div><div></div><div></div></div> <div><div></div><div></div></div> <div><div></div><div></div></div> <div><div></div><div></div></div> <div><div></div><div></div></div> <div><div></div><div></div></div> <div><div></div><div></div></div> <div><div></div><div></div></div> <div><div></div><div></div></div> <div><div></div><div></div></div> <div><div></div><div></div></div> <div><div></div><div></div></div> <div><div></div><div></div></div> <div><div></div><div></div></div> <div><div></div><div></div></div> <div><div></div><div></div></div> <div><div></div><div></div></div> <div><div></div><div></div></div> <div><div></div><div></div></div> <div><div></div><div></div></div> <div><div></div><div></div></div> <div><div></div><div></div></div> <div><div></div><div></div></div> <div><div></div><div></div></div> <div><div></div><div></div></div> <div><div></div><div></div></div> <div><div></div><div></div></div> <div><div></div><div></div></div> <div><div></div><div></div></div> <div><div></div><div></div></div> <div><div></div><div></div></div> <div><div></div><div></div></div> <div><div></div><div></div></div> <div><div></div><div></div></div> <div><div></div><div></div></div> <div><div></div><div></div></div> <div><div></div><div></div></div> <div><div></div><div></div></div> <div><div></div><div></div></div> <div><div></div><div></div></div> <div><div></div><div></div></div> <div><div></div><div></div></div> <div><div></div><div></div></div> <div><div></div><div></div></div> <div><div></div><div></div></div> <div><div></div><div></div></div> <div><div></div><div></div></div> <div><div></div><div></div></div> <div><div></div><div></div></div> <div><div></div><div></div></div> <div><div></div><div></div></div> <div><div></div><div></div></div> <div><div></div><div></div></div> <div><div></div><div></div></div> <div><div></div><div></div></div> <div><div></div><div></div></div> <div><div></div><div></div></div> <div><div></div><div></div></div> <div><div></div><div></div></div> <div><div></div><div></div></div> <div><div></div><div></div></div> <div><div></div><div></div></div> <div><div></div><div></div></div> <div><div></div><div></div></div> <div><div></div><div></div></div> <div><div></div><div></div></div> <div><div></div><div></div></div> <div><div></div><div></div></div> <div><div></div><div></div></div> <div><div></div><div></div></div> <div><div></div><div></div></div> <div><div></div><div></div></div> <div><div></div><div></div></div> <div><div></div><div></div></div> <div><div></div><div></div></div> <div><div></div><div></div></div> <div><div></div><div></div></div> <div><div></div><div></div></div> <div><div></div><div></div></div> <div><div></div><div></div></div> <div><div></div><div></div></div> <div><div></div><div></div></div> <div><div></div><div></div></div> <div><div></div><div></div></div> <div><div></div><div></div></div> <div><div></div><div></div></div> <div><div></div><div></div></div> <div><div></div><div></div></div> <div><div></div><div></div></div> <div><div></div><div></div></div> <div><div></div><div></div></div> <div><div></div><div></div></div> <div><div></div><div></div></div> <div><div></div><div></div></div> <div><div></div><div></div></div> <div><div></div><div></div></div> <div><div></div><div></div></div> <div><div></div><div></div></div> <div><div></div><div></div></div> <div><div></div><div></div></div> <div><div></div><div></div></div> <div><div></div><div></div></div> <div><div></div><div></div></div> <div><div></div><div></div></div> <div><div></div><div></div></div> <div><div></div><div></div></div> <div><div></div><div></div></div> <div><div></div><div></div></div> <div><div></div><div></div></div> <div><div></div><div></div></div> <div><div></div><div></div></div> <div><div></div><div></div></div> <div><div></div><div></div></div> <div><div></div><div></div></div> <div><div></div><div></div></div> <div><div></div><div></div></div> <div><div></div><div></div></div> <div><div></div><div></div></div> <div><div></div><div></div></div> <div><div></div><div></div></div> <div><div></div><div></div></div> <div><div></div><div></div></div> <div><div></div><div></div></div> <div><div></div><div></div></div> <div><div></div><div></div></div> <div><div></div><div></div></div> <div><div></div><div></div></div> <div><div></div><div></div></div> <div><div></div><div></div></div> <div><div></div><div></div></div> <div><div></div><div></div></div> <div><div></div><div></div></div> <div><div></div><div></div></div> <div><div></div><div></div></div> <div><div></div><div></div></div> <div><div></div><div></div></div> <div><div></div><div></div></div> <div><div></div><div></div></div> <div><div></div><div></div></div> <div><div></div><div></div></div> <div><div></div><div></div></div> <div><div></div><div></div></div> <div><div></div><div></div></div> <div><div></div><div></div></div> <div><div></div><div></div></div> <div><div></div><div></div></div> <div><div></div><div></div></div> <div><div></div><div></div></div> <div><div></div><div></div></div> <div><div></div><div></div></div> <div><div></div><div></div></div> <div><div></div><div></div></div> <div><div></div><div></div></div> <div><div></div><div></div></div> <div><div></div><div></div></div> <div><div></div><div></div></div> <div><div></div><div></div></div> <div><div></div><div></div></div> <div><div></div><div></div></div> <div><div></div><div></div></div> <div><div></div><div></div></div> <div><div></div><div></div></div> <div><div></div><div></div></div> <div><div></div><div></div></div> <div><div></div><div></div></div> <div><div></div><div></div></div> <div><div></div><div></div></div> <div><div></div><div></div></div> <div><div></div><div></div></div> <div><div></div><div></div></div> <div><div></div><div></div></div> <div><div></div><div></div></div> <div><div></div><div></div></div> <div><div></div><div></div></div> <div><div></div><div></div></div> <div><div></div><div></div></div> <div><div></div><div></div></div> <div><div></div><div></div></div> <div><div></div><div></div></div> <div><div></div><div></div></div> <div><div></div><div></div></div> <div><div></div><div></div></div> <div><div></div><div></div></div> <div><div></div><div></div></div> <div><div></div><div></div></div> <div><div></div><div></div></div> <div><div></div><div></div></div> <div><div></div><div></div></div> <div><div></div><div></div></div> <div><div></div><div></div></div> <div><div></div><div></div></div> <div><div></div><div></div></div> <div><div></div><div></div></div> <div><div></div><div></div></div> <div><div></div><div></div></div> <div><div></div><div></div></div> <div><div></div><div></div></div> <div><div></div><div></div></div> <div><div></div><div></div></div> <div><div></div><div></div></div> <div><div></div><div></div></div> <div><div></div><div></div></div> <div><div></div><div></div></div> <div><div></div><div></div></div> <div><div></div><div></div></div> <div><div></div><div></div></div> <div><div></div><div></div></div> <div><div></div><div></div></div> <div><div></div><div></div></div> <div><div></div><div></div></div> <div><div></div><div></div></div> <div><div></div><div></div></div> <div><div></div><div></div></div> <div><div></div><div></div></div> <div><div></div><div></div></div> <div><div></div><div></div></div> <div><div></div><div></div></div> <div><div></div><div></div></div> <div><div></div><div></div></div> <div><div></div><div></div></div> <div><div></div><div></div></div> <div><div></div><div></div></div> <div><div></div><div></div></div> <div><div></div><div></div></div> <div><div></div><div></div></div> <div><div></div><div></div></div> <div><div></div><div></div></div> <div><div></div><div></div></div> <div><div></div><div></div></div> <div><div></div><div></div></div> <div><div></div><div></div></div> <div><div></div><div></div></div> <div><div></div><div></div></div> <div><div></div><div></div></div> <div><div></div><div></div></div> <div><div></div><div></div></div> <div><div></div><div></div></div> <div><div></div><div></div></div> <div><div></div><div></div></div> <div><div></div><div></div></div> <div><div></div><div></div></div> <div><div></div><div></div></div> <div><div></div><div></div></div> <div><div></div><div></div></div> <div><div></div><div></div></div> <div><div></div><div></div></div> <div><div></div><div></div></div> <div><div></div><div></div></div> <div><div></div><div></div></div> <div><div></div><div></div></div> <div><div></div><div></div></div> <div><div></div><div></div></div> <div><div></div><div></div></div> <div><div></div><div></div></div> <div><div></div><div></div></div> <div><div></div><div></div></div> <div><div></div><div></div></div> <div><div></div><div></div></div> <div><div></div><div></div></div> <div><div></div><div></div></div> <div><div></div><div></div></div> <div><div></div><div></div></div> <div><div></div><div></div></div> <div><div></div><div></div></div> <div><div></div><div></div></div> <div><div></div><div></div></div> <div><div></div><div></div></div> <div><div></div><div></div></div> <div><div></div><div></div></div> <div><div></div><div></div></div> <div><div></div><div></div></div> <div><div></div><div></div></div> <div><div></div><div></div></div> <div><div></div><div></div></div> <div></div>			
---	--	--	--



Photograph B1.105: Existing view from PRow AX 21/3 parallel to the River Axe looking southeast to northwest towards the F Route, the route of the proposed 400kV underground cables and overhead line and towards the site of the proposed CSE compound near the M5 motorway. Existing views extend across open farmland with some filtering and screening by field boundary hedgerow and trees



Photograph B1.106: Existing view from PRow AX 21/3 parallel to the River Axe looking west to east along the River Axe and across farmland towards the F Route, and the route of the proposed 400kV underground cables. Existing views extend across open farmland with views northwest shortened by mature shrubs and trees north of the River Axe



Photograph B1.107: Existing view from PRow AX 21/3 looking east to southeast across farmland towards properties on Biddisham Lane

A	22/03/2014	DCO SUBMISSION	JS	NH	NH
ISSUE	DATE	COMMENTS	DRAW	CHKD	APP'D

<u>Title</u> NATIONAL GRID (HINKLEY POINT C CONNECTION PROJECT) ENVIRONMENTAL STATEMENT VOLUME 5.7.3					
SECTION B: PHOTOGRAPHS OF EXISTING VIEWS WITHIN 1KM					

</



Photograph B1.108: Existing view from PRow AX 21/3 along the River Axe south of Loxton adjacent to the M5 motorway looking south across flat farmland along the F Route into the distance and towards the route of the proposed 400kV underground cables, the site of the proposed CSE compound and towards the route of the proposed 400kV overhead line beyond



Photograph B1.109: Existing view from PRow AX 21/3 on the footbridge over the M5 motorway looking east to southwest across the M5 motorway and farmland towards the F Route, the route of the proposed 400kV underground cables and 400kV overhead line and towards the site of the proposed CSE compound screened by the road bridge embankment including mature trees and shrubs



Photograph B1.110: Existing view from PRow AX 21/3 on the footbridge over the M5 motorway looking northwest to northeast along the motorway and towards adjacent tree cover and the F Route above to the south of the Mendip Hills

A	22/03/2014	DCO SUBMISSION	JS	NH	NH
ISSUE	DATE	COMMENTS	DRAW	CHKD	APP'D

<u>Title</u> NATIONAL GRID (HINKLEY POINT C CONNECTION PROJECT) ENVIRONMENTAL STATEMENT VOLUME 5.7.3					
SECTION B: PHOTOGRAPHS OF EXISTING VIEWS WITHIN 1KM					



Photograph B1.111: Existing view from PRow AX 21/3 adjacent to the River Axe looking east and south towards the F Route beyond the M5 motorway and towards the road bridge and embankment trees and shrubs screening the proposed CSE compound



Photograph B1.112: Existing view from adjacent residential property on Kennel Lane looking west and south across farmland towards the F Route and the route of the proposed 400kV underground cables south of the Mendip Hills AONB, above and between intervening field boundary hedgerow and trees



Photograph B1.113: Existing view from Webbington Road near PRow AX 15/2 looking southwest across the Somerset Levels towards Brent Knoll and Loxton Gap, towards the route of the proposed 400kV underground cables and the F Route beyond, and towards the site of the proposed CSE compound and the route of the proposed 400kV overhead line further to the southwest

A	22/03/2014	DCO SUBMISSION	JS	NH	NH
ISSUE	DATE	COMMENTS	DRAW	CHKD	APP'D

<u>Title</u> NATIONAL GRID (HINKLEY POINT C CONNECTION PROJECT) ENVIRONMENTAL STATEMENT VOLUME 5.7.3 SECTION B: PHOTOGRAPHS OF EXISTING VIEWS WITHIN 1KM					
--	--	--	--	--	--

nationalgrid			
National Grid plc, Warwick Technology Park, Galloway Hill, Warwick, CV34 6DA			
NG INVESTMENT No.	APPLICATION No.		IN
20897	EN020001		A3
FIGURE No.	DRAWING No.	SCALE	
7.7.42	IN1979.24.002	NTS	
SHEET 42 OF 44			ISSUE
			A



Photograph B1.114: Existing view from Webbington Road and the West Mendip Way long distance footpath looking north and northeast towards the route of the proposed 400kV underground cables and towards the F Route



Photograph B1.115: Existing view from Sevier Road opposite the junction with Cowslip Lane looking southeast through a field gate towards the F Route in the distance beyond the M5 motorway



Photograph B1.116: Existing view from adjacent properties on Sevier Road looking south and east across farmland towards the F Route beyond the M5 motorway and towards the road bridge with embankment trees and shrubs screening the proposed cable sealing end compound site

A	22/03/2014	DCO SUBMISSION	JS	NH	NH
ISSUE	DATE	COMMENTS	DRAW	CHKD	APP'D

<u>Title</u> NATIONAL GRID (HINKLEY POINT C CONNECTION PROJECT) ENVIRONMENTAL STATEMENT VOLUME 5.7.3 SECTION B: PHOTOGRAPHS OF EXISTING VIEWS WITHIN 1KM					
--	--	--	--	--	--

<div><div><div>nationalgrid</div><div>National Grid plc, Warwick Technology Park, Galloway Hill, Warwick, CV34 6DA</div></div></div>			
NG INVESTMENT No.	APPLICATION No.		IN
20897	EN020001		A3
FIGURE No.	DRAWING No.	SCALE	
7.7.43	IN1979.24.002	NTS	
SHEET 43 OF 44			ISSUE
			A



Photograph B1.117: Existing view from White House Lane looking southeast along the River Axe towards the F Route beyond the M5 motorway in the distance

A	22/03/2014	DCO SUBMISSION	JS	NH	NH
ISSUE	DATE	COMMENTS	DRAW	CHK'D	APP'D
<div>Title</div> <div>NATIONAL GRID (HINKLEY POINT C CONNECTION PROJECT) ENVIRONMENTAL STATEMENT VOLUME 5.7.3</div> <div>SECTION B: PHOTOGRAPHS OF EXISTING VIEWS WITHIN 1KM</div>					
<div><div><div>nationalgrid</div><div>National Grid plc, Warwick Technology Park, Gallowes Hill, Warwick, CV34 6DA</div></div></div>					
NG INVESTMENT No.		APPLICATION No.		IN	
20897		EN020001		A3	
FIGURE No.		DRAWING No.		SCALE	
7.7.44		IN1979.24.002		NTS	
SHEET 44 OF 44				ISSUE	
				A	